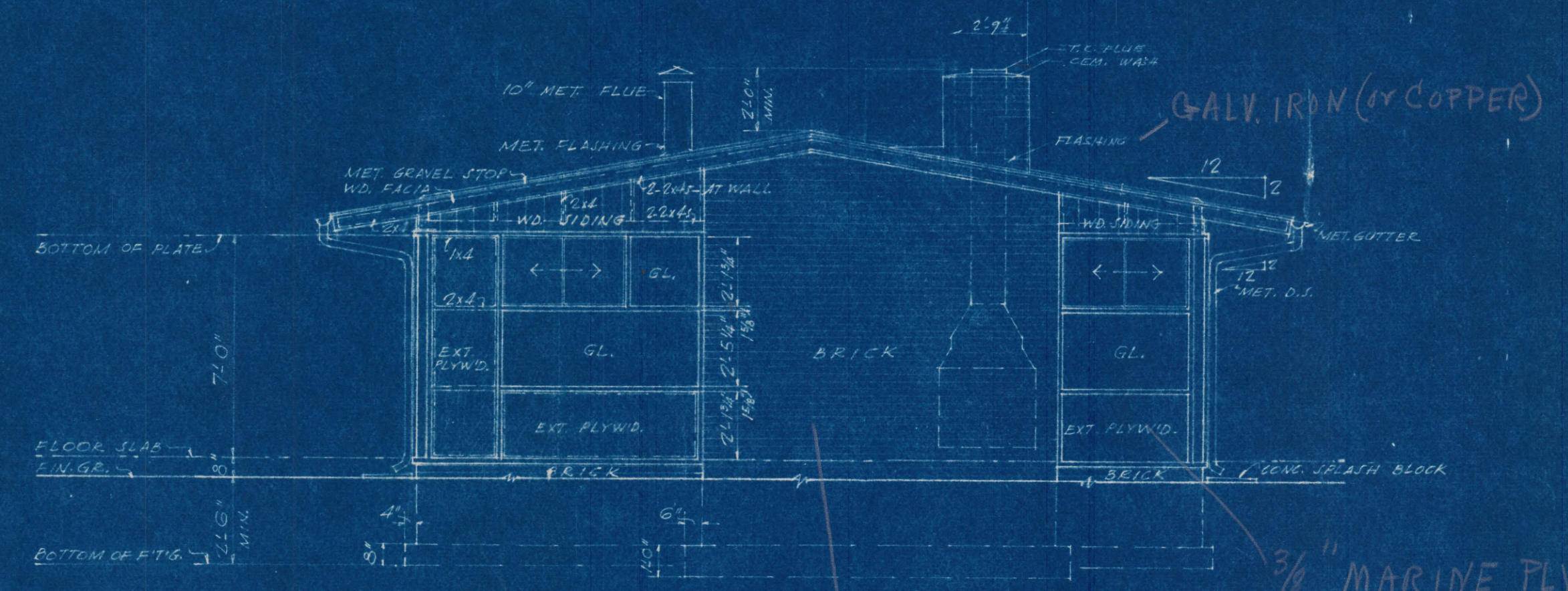
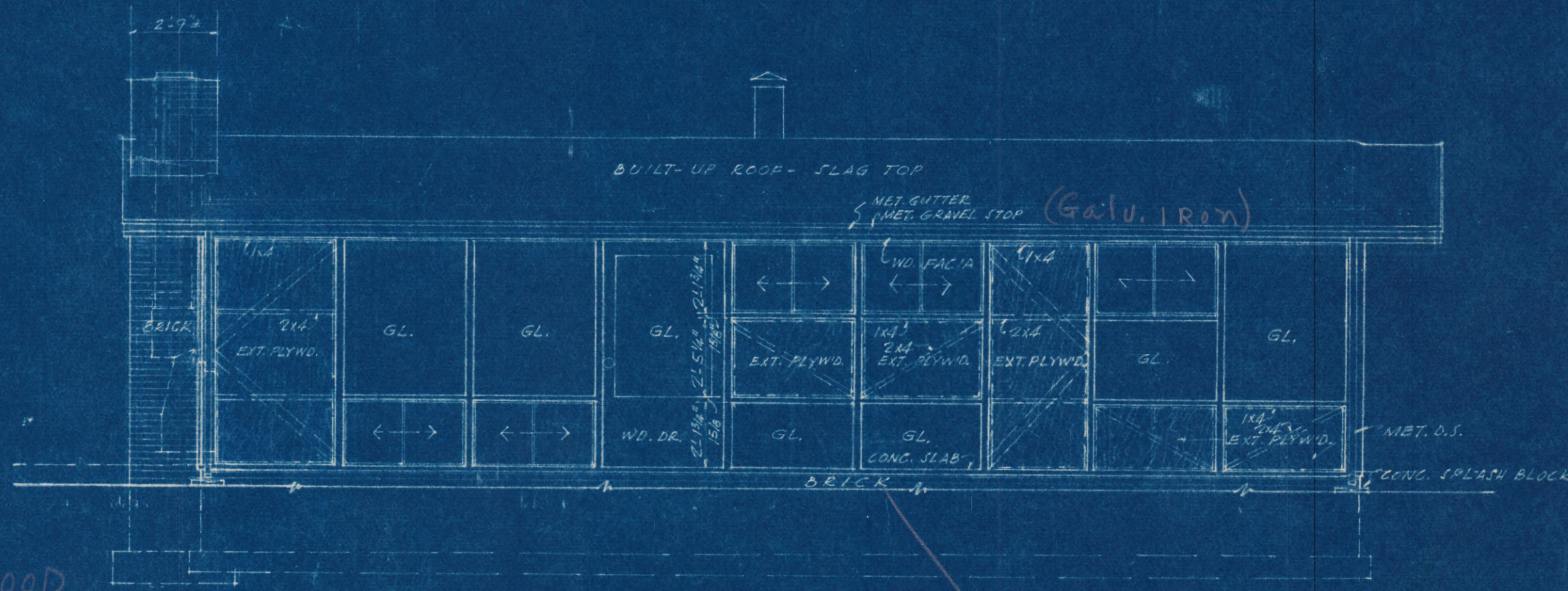


FACIA & OTHER EXTERIOR TRIM: CLEAR FIR
OR WHITE PINE



ELEVATION "A"

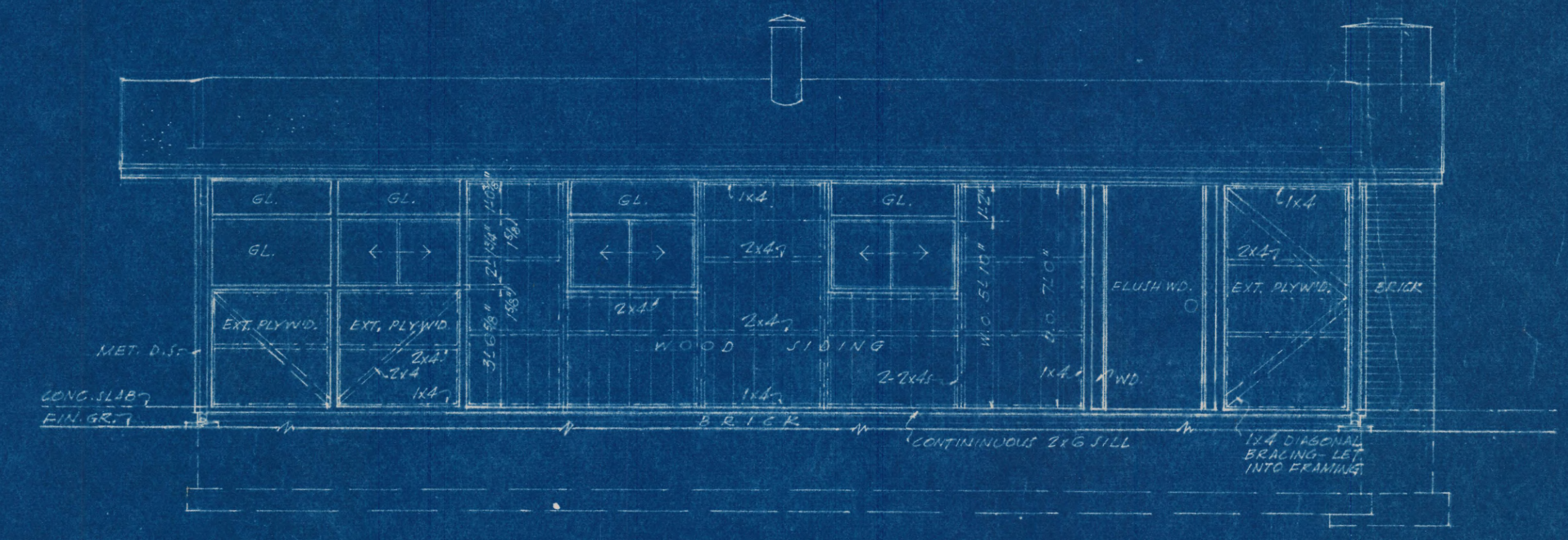


ELEVATION "B"

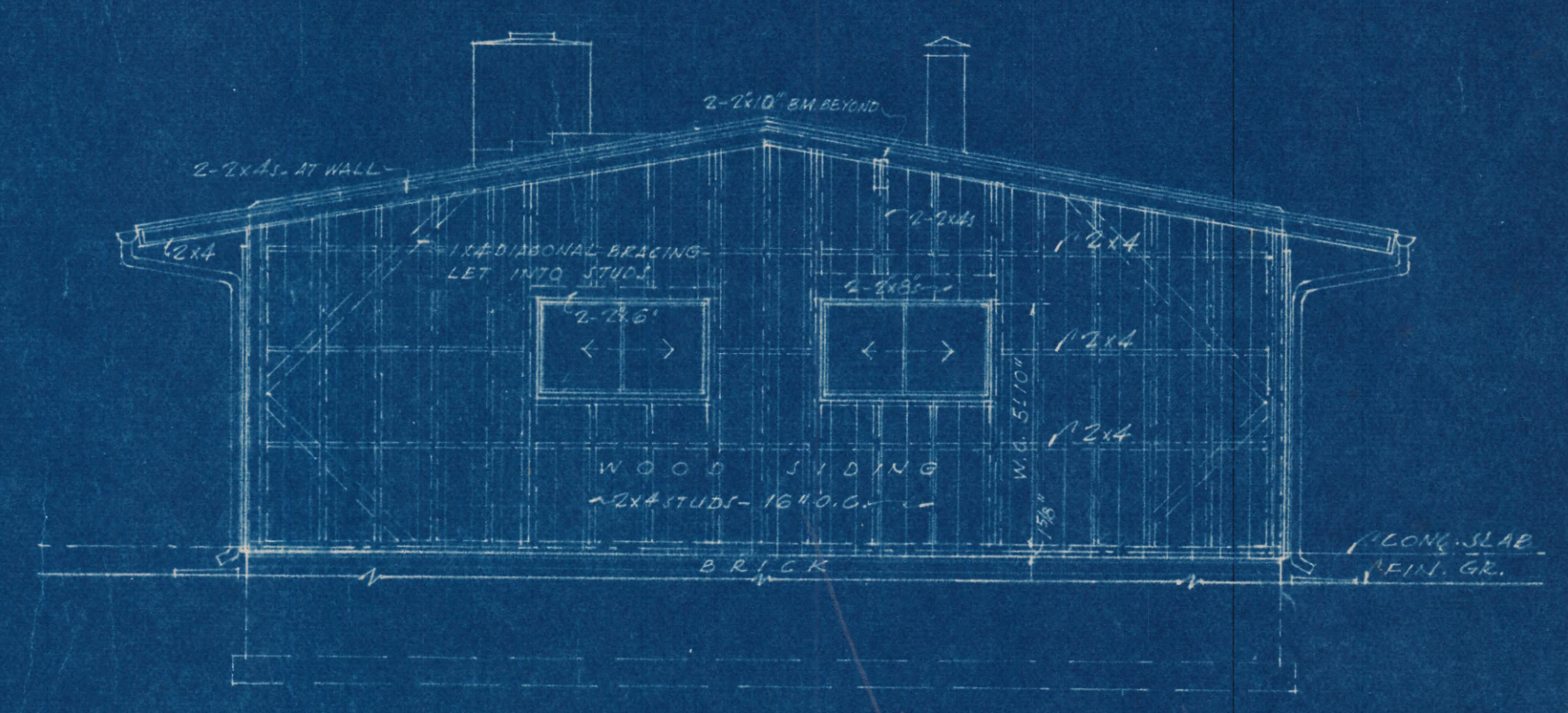
GALV. IRON (OR COPPER)
3/8" MARINE PLYWOOD
CAULK JOINTS -

Same as at chimney

2nd Hand brick or
Good Quality sand
finish brick - important
not to use hard smooth
surface brick



ELEVATION "C"

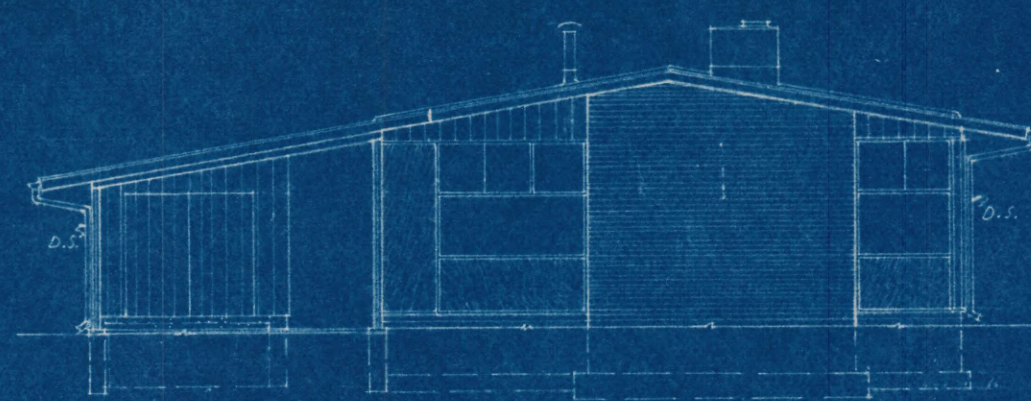


ELEVATION "D"

knotty pine
REDWOOD, CYPRESS OR
OTHER SUITABLE LOCAL
WOOD - T. & G.

HOUSE TYPE, A

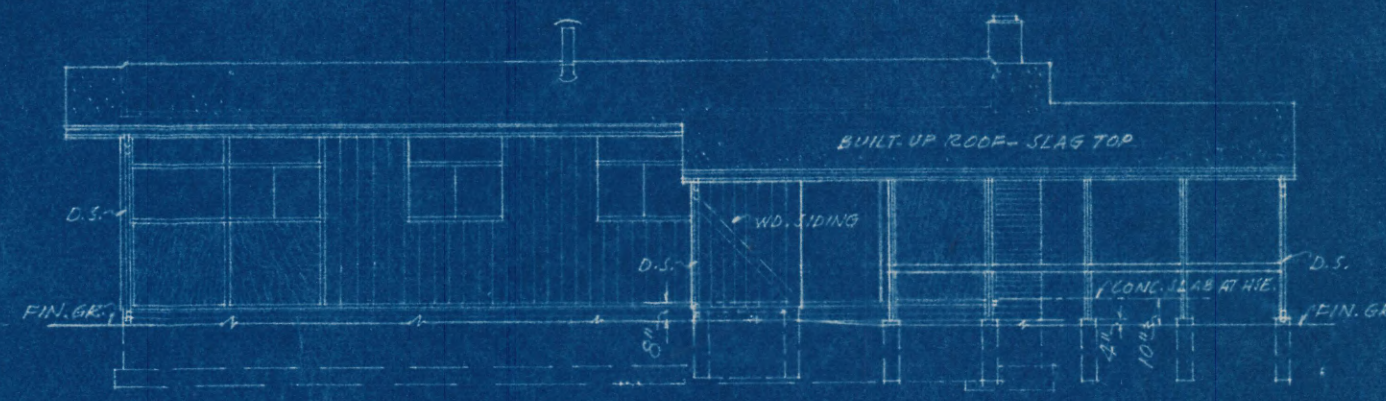
HOLMES RUN ACRES GALLOWS ROAD, FAIRFAX COUNTY, VA.		5H
ELEVATIONS		2
SCALE: 1/4" = 1'-0"	REVISIONS: P. 1, 9-20-50	DATE: 12-21-19-51
SATTERLEE & LETHBRIDGE - ARCHITECTS-ENGINEERS 3 DU PONT CIRC. E. WASHINGTON		OF 11



ELEVATION 'A' OF BASIC HOUSE

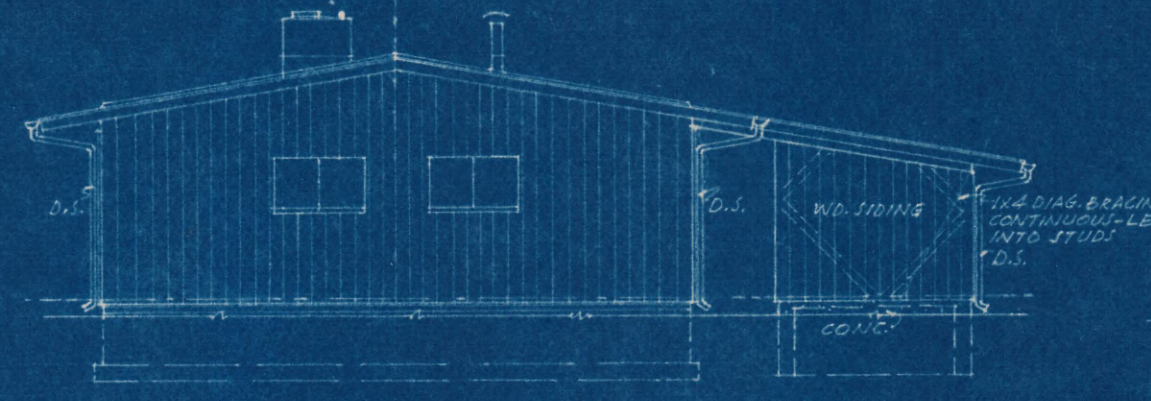
FRONT ELEVATION

SCALE - 1/8" = 1'-0"



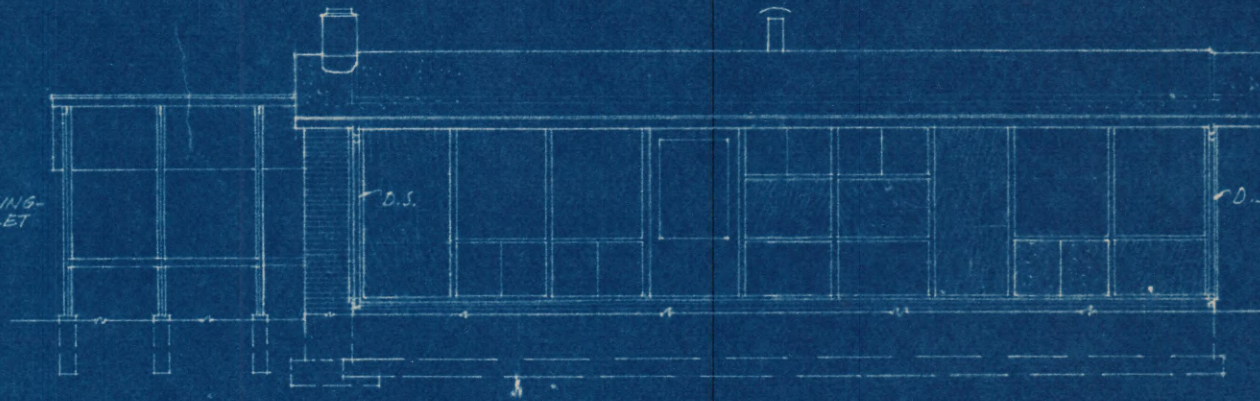
ELEVATION 'C' OF BASIC HOUSE

SIDE ELEVATION



ELEVATION 'D' OF BASIC HOUSE

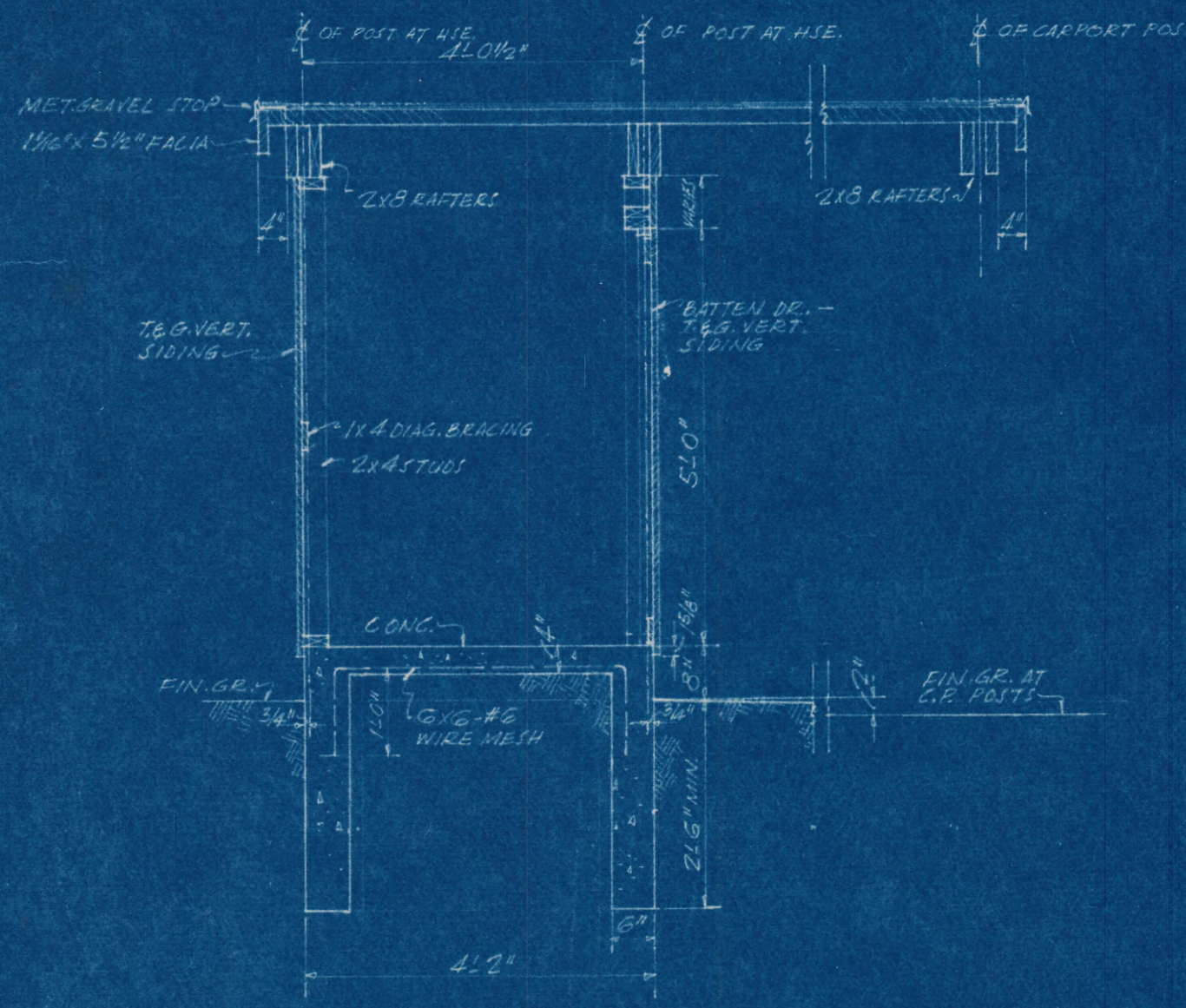
REAR ELEVATION



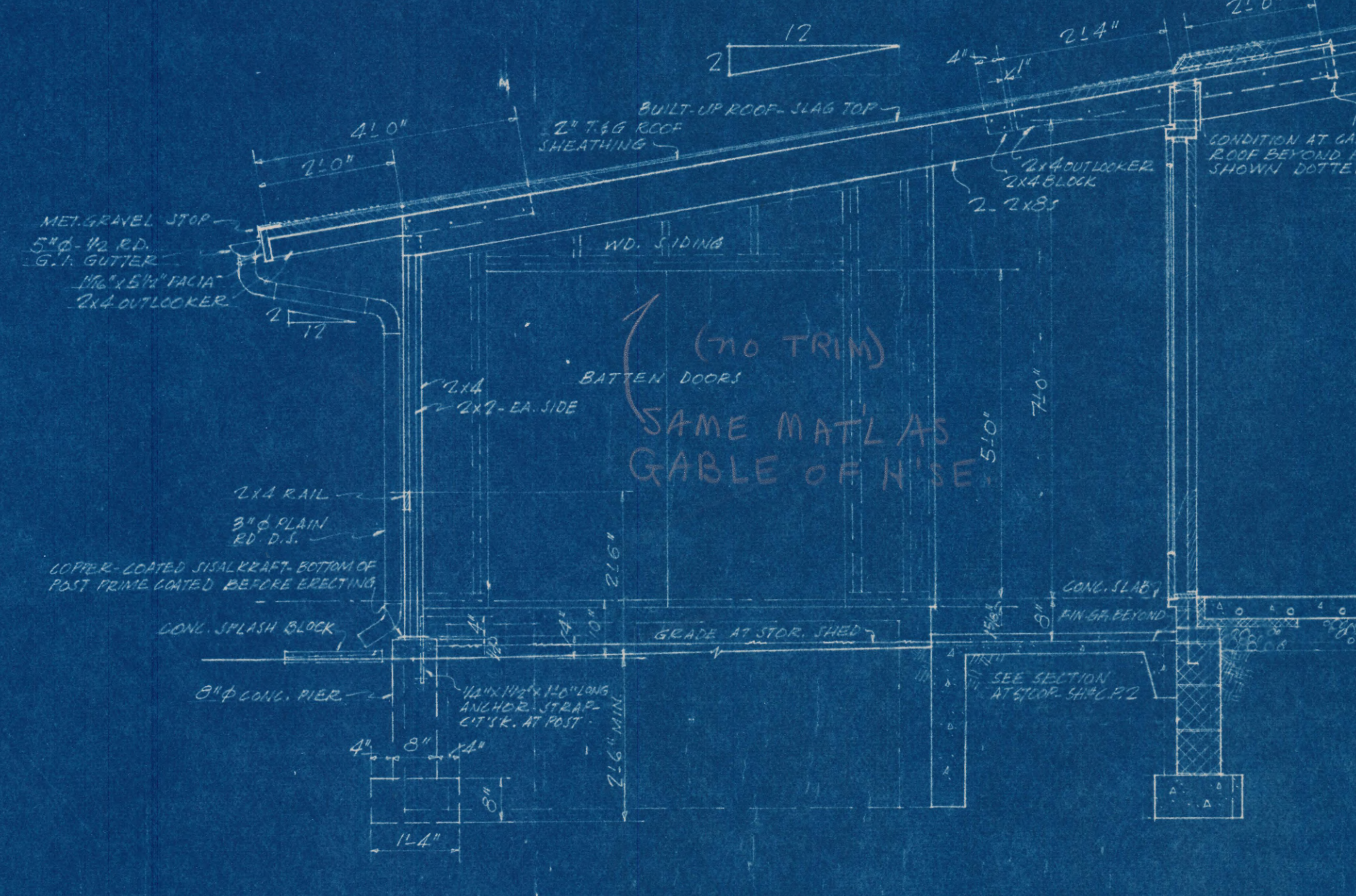
ELEVATION 'B' OF BASIC HOUSE

SIDE ELEVATION

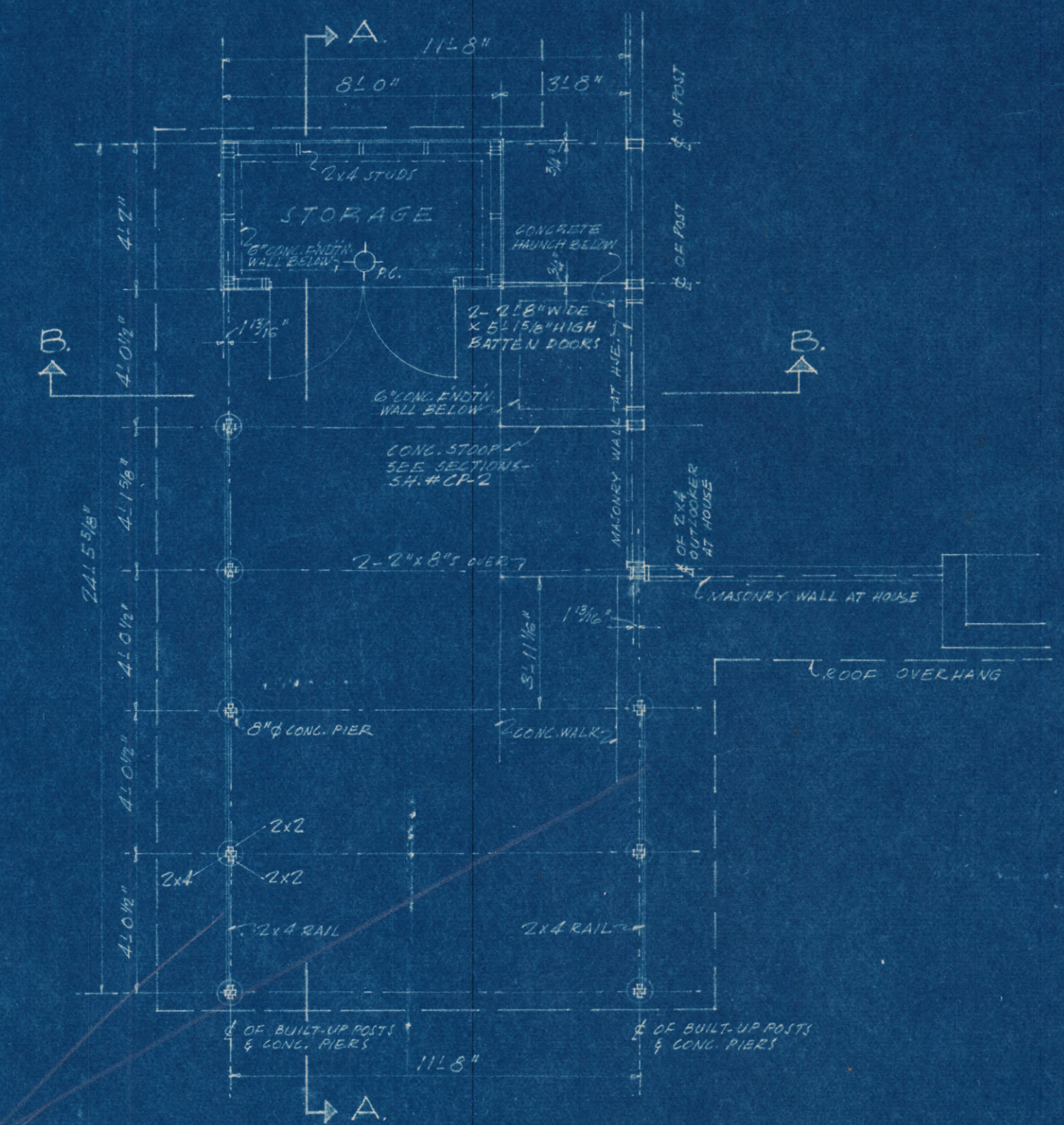
MATERIALS: SAME AS FOR HOUSE



SECTION A-A: SCALE - 1/8" = 1'-0"



SECTION B-B: SCALE - 1/8" = 1'-0"



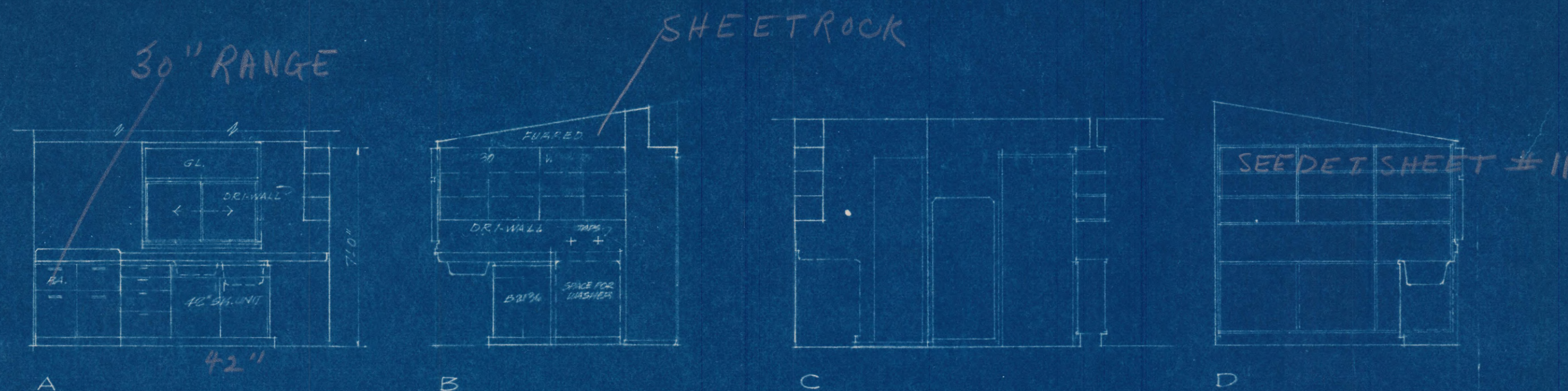
PLAN: SCALE - 1/4" = 1'-0"

OR CONTINUOUS 8" WIDE BRICK CURB - 4" ABOVE FIN. GR.

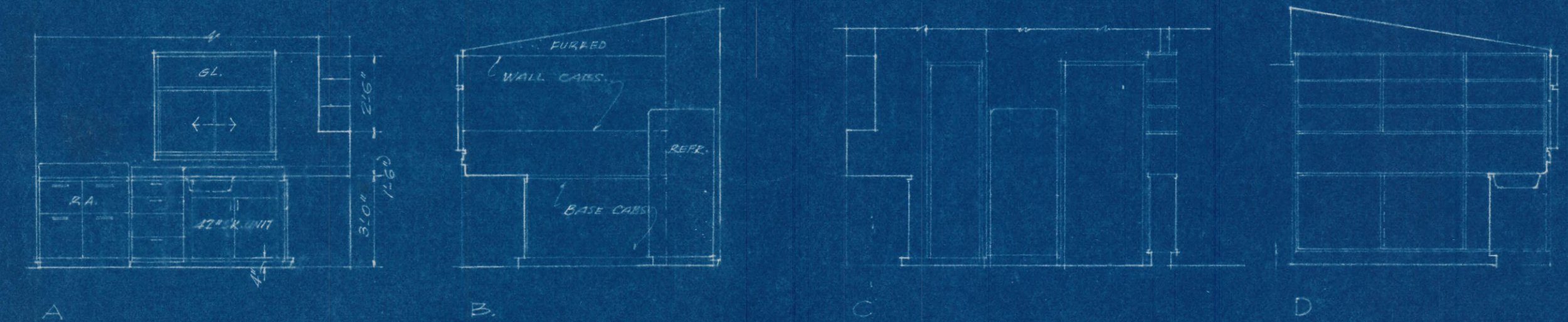
NOTE: C.P. SIMILAR AT BASEMENT HSE. - EXCEPT POSTS EXTEND TO MEET LOWERED GRADE.

HOUSE TYPES A & B-1

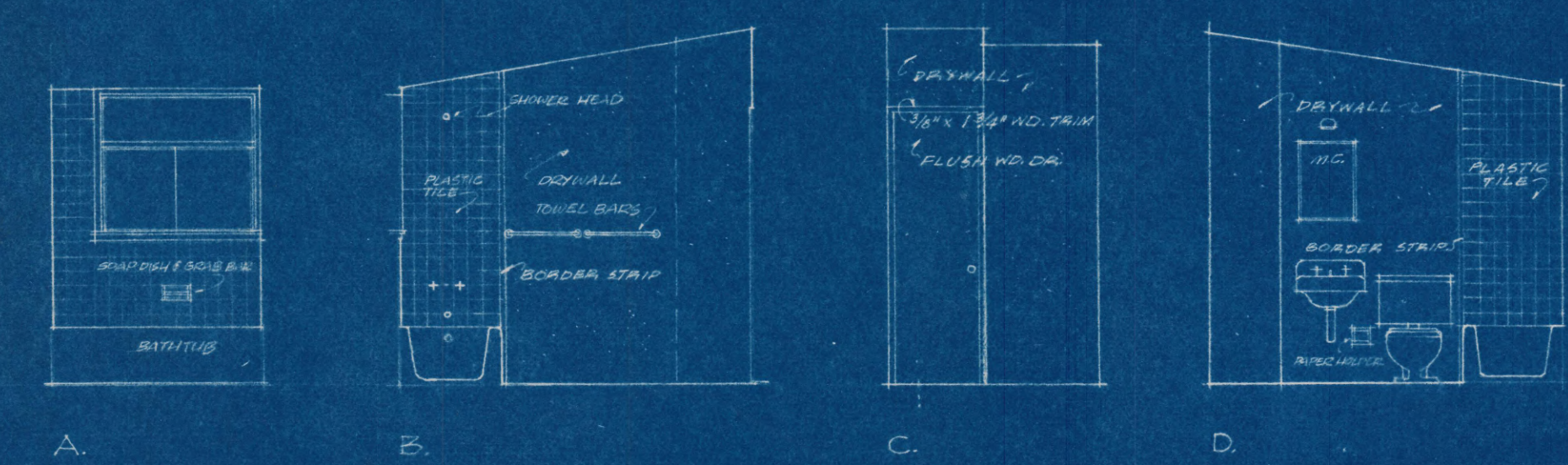
HOLMES RUN ACRES		SH
GALLOWES ROAD, FAIRFAX COUNTY, VA		
CARPORT 1		7
SCALE	NOTED	
DATE	REVISIONS R1-9-20-50	OF 11
SATTLERLEE & LETHBRIDGE - ARCHITECTS-ENGINEERS		
3 DU PONT CIRCLE - WASHINGTON, D. C.		



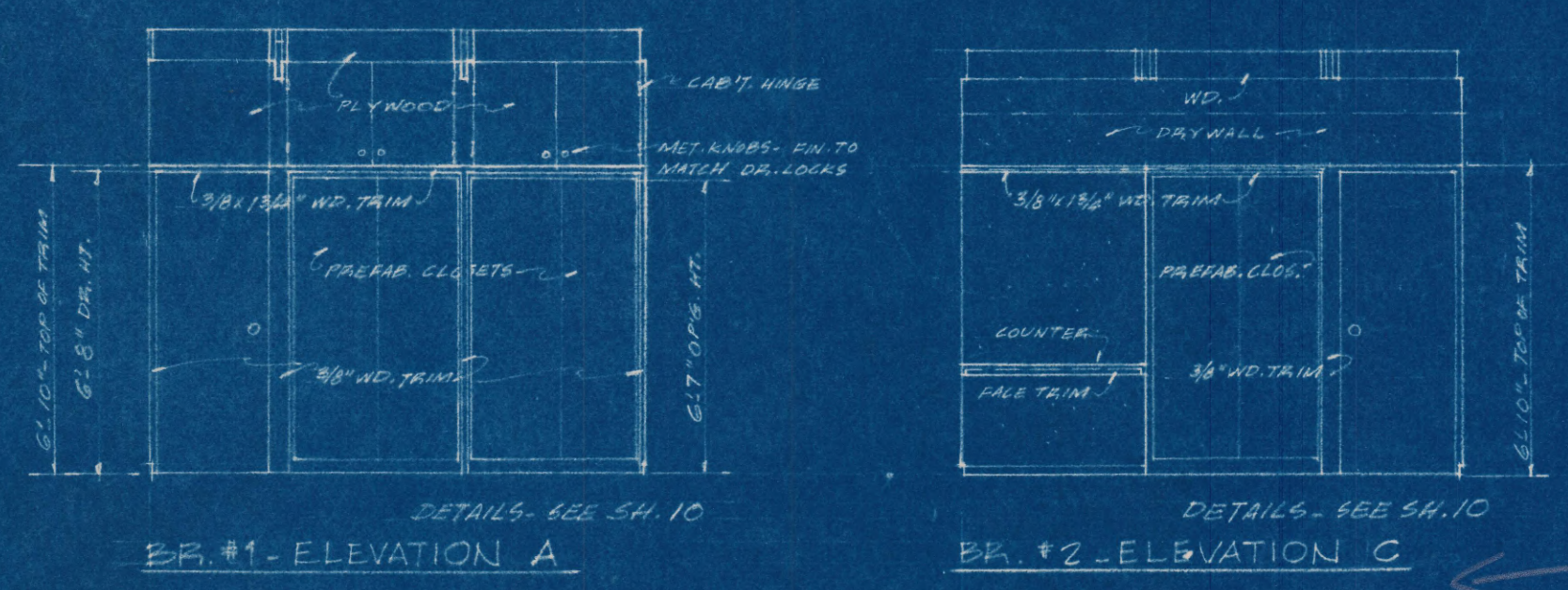
KITCHEN ELEVATIONS - HOUSE ON SLAB - TYPE A. SCALE: 1/4" = 1'-0"



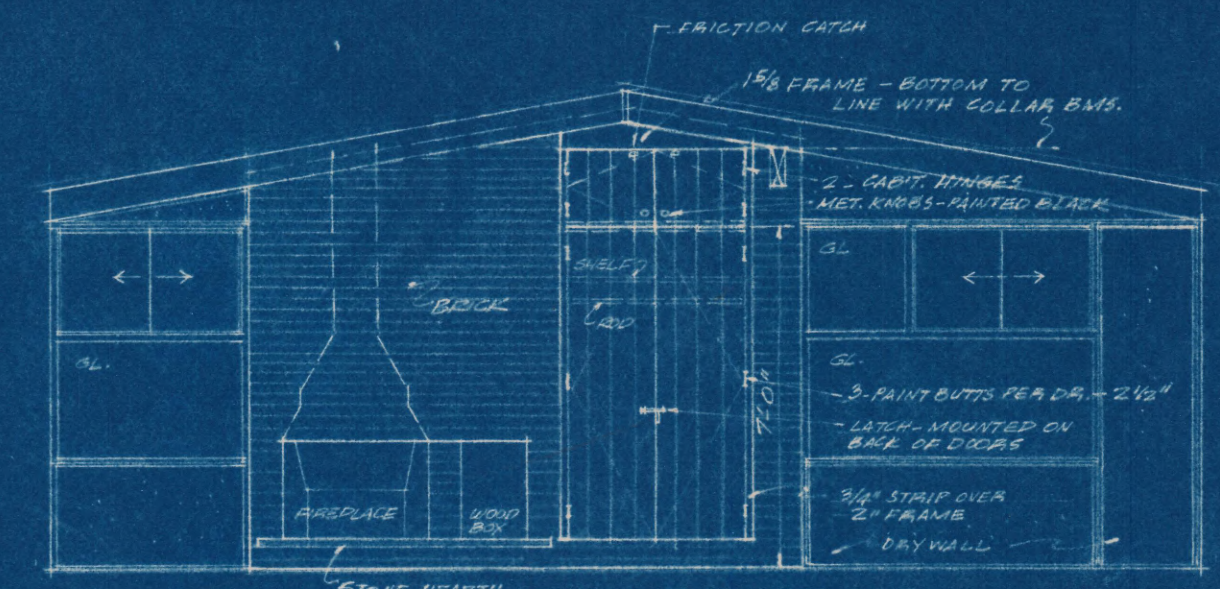
KITCHEN ELEVATIONS - HOUSE WITH BASEMENT - TYPE B. SCALE: 1/4" = 1'-0"



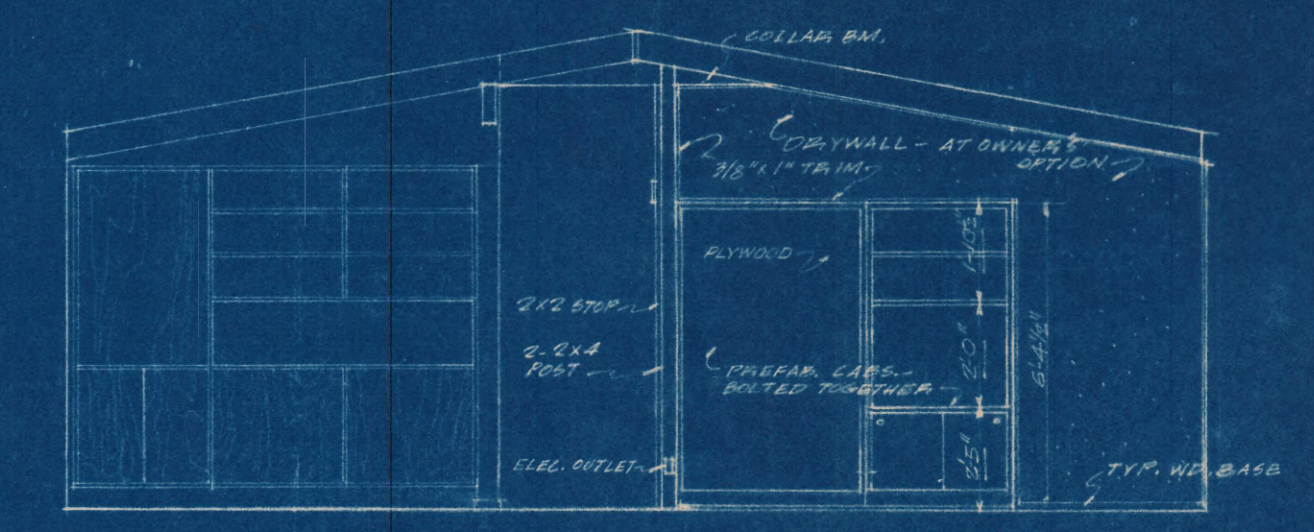
BATHROOM ELEVATIONS - SCALE: 1/4" = 1'-0"



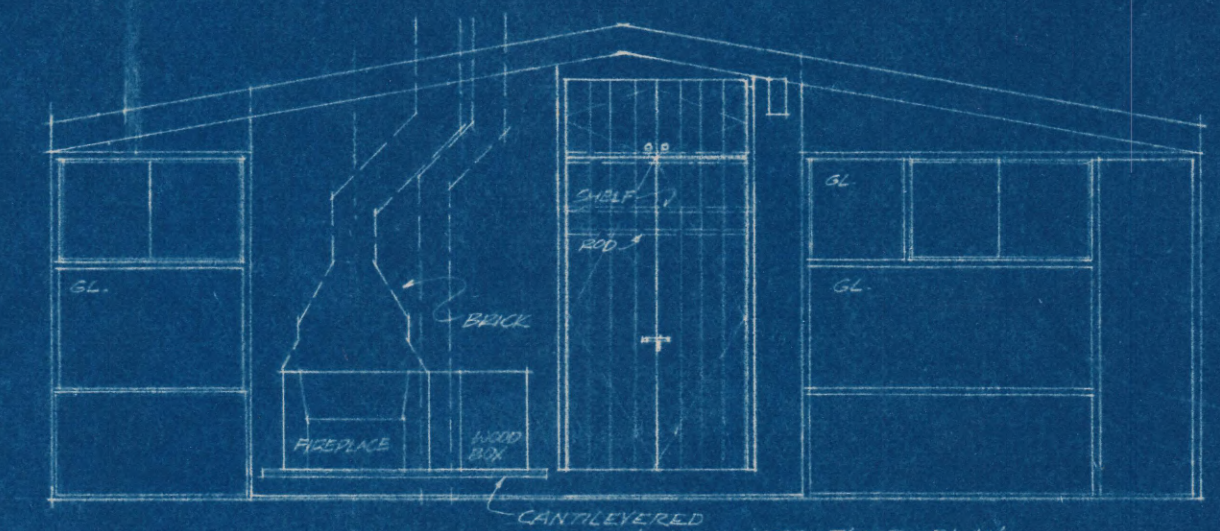
BEDROOM ELEVATIONS - SCALE: 1/4" = 1'-0"



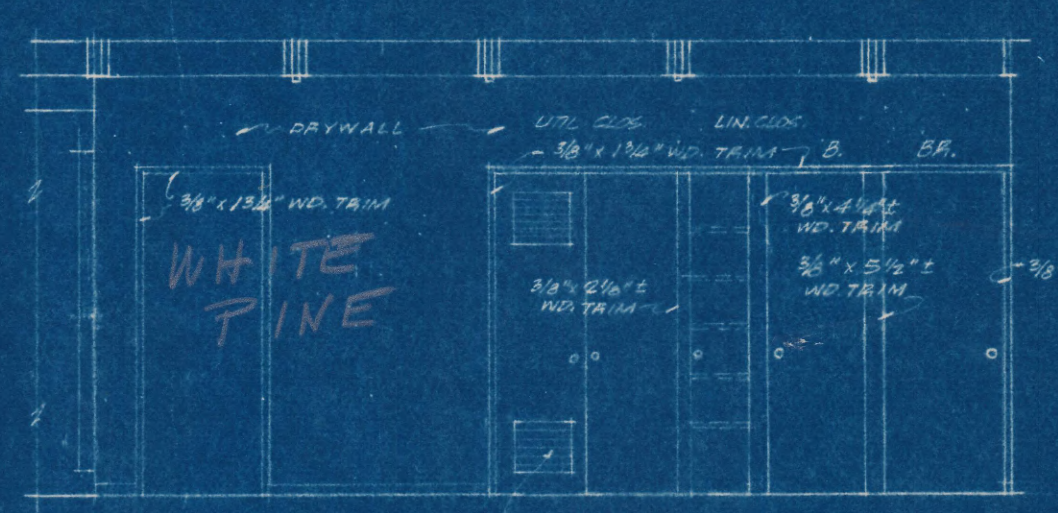
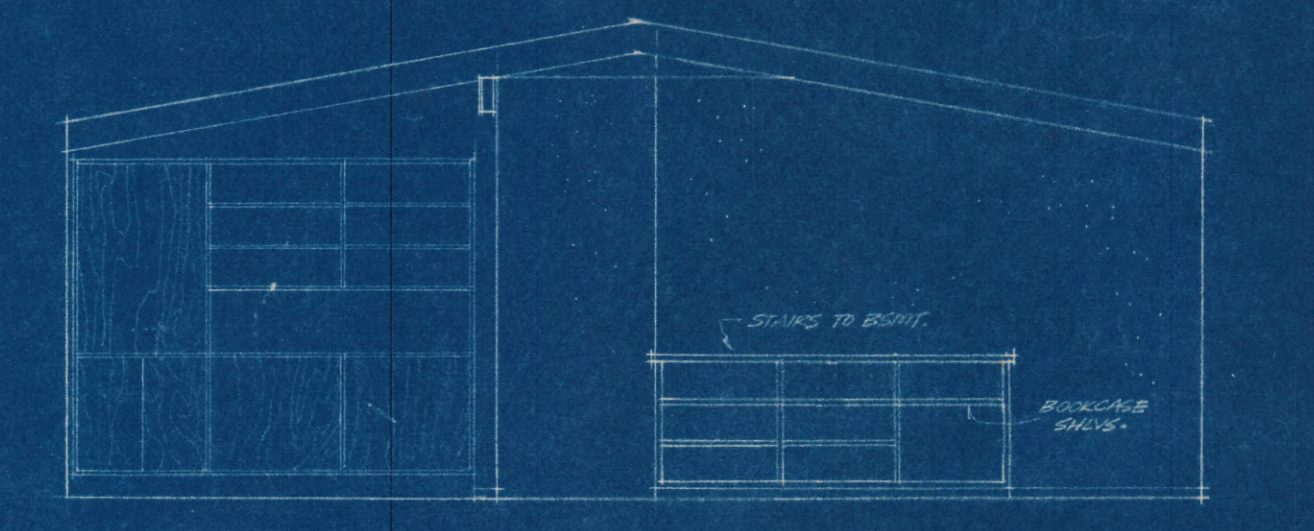
LIVING ROOM - DINING ROOM ELEVATIONS - HOUSE ON SLAB - TYPE A. SCALE: 1/4" = 1'-0"



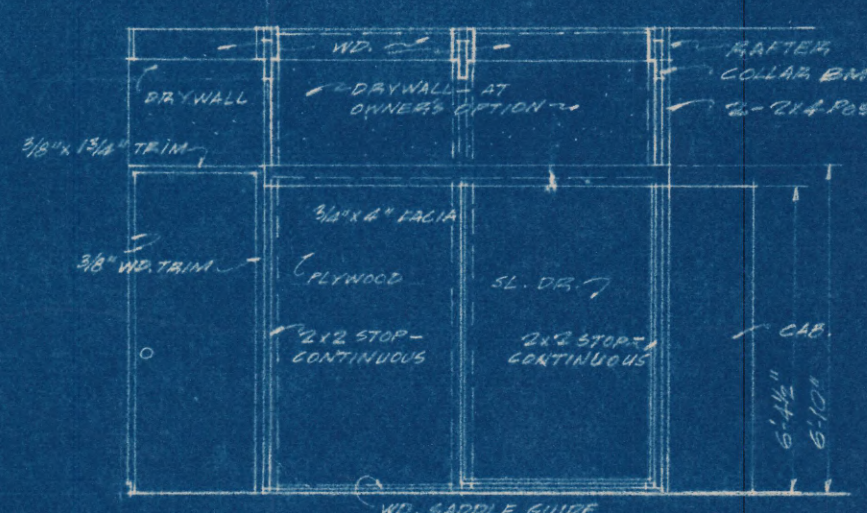
LIVING ROOM - DINING ROOM ELEVATIONS - HOUSE WITH BASEMENT - TYPE B. SCALE: 1/4" = 1'-0"



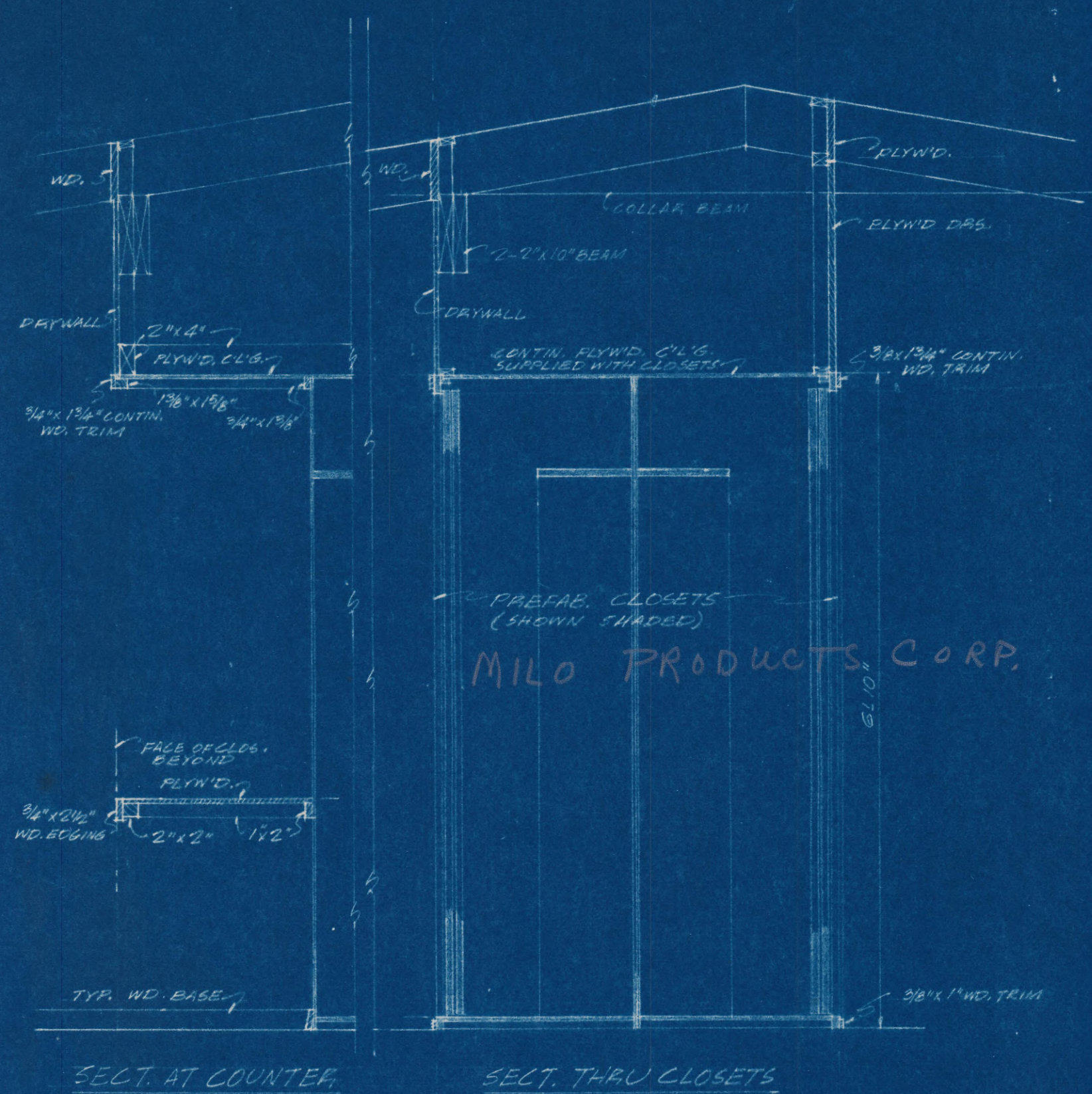
LIVING ROOM - DINING ROOM ELEVATIONS - HOUSE WITH BASEMENT - TYPE B. SCALE: 1/4" = 1'-0"



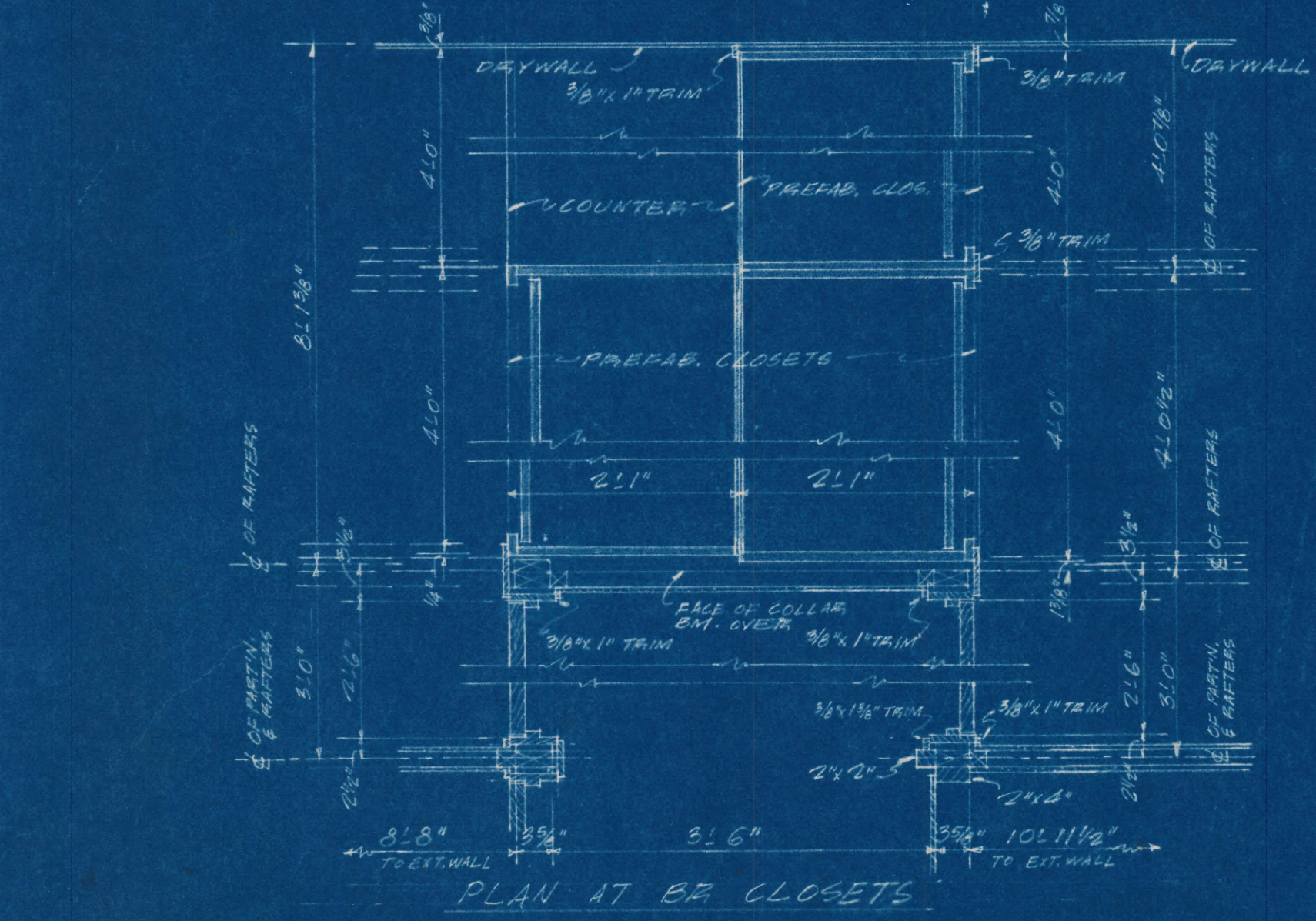
HALL ELEVATIONS: SCALE: 1/4" = 1'-0"



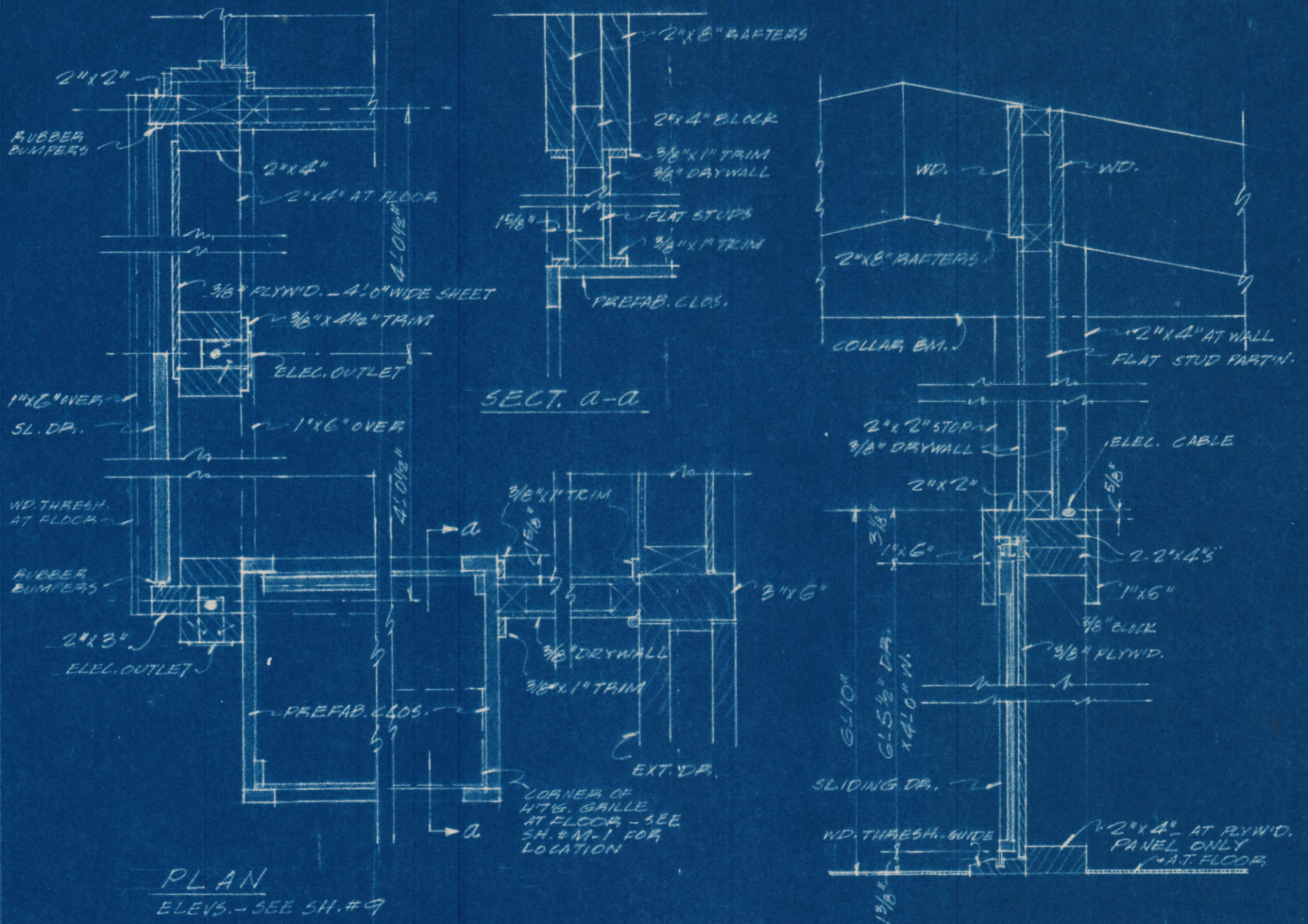
TRIM AT DOORS & BASE, WHITE PINE



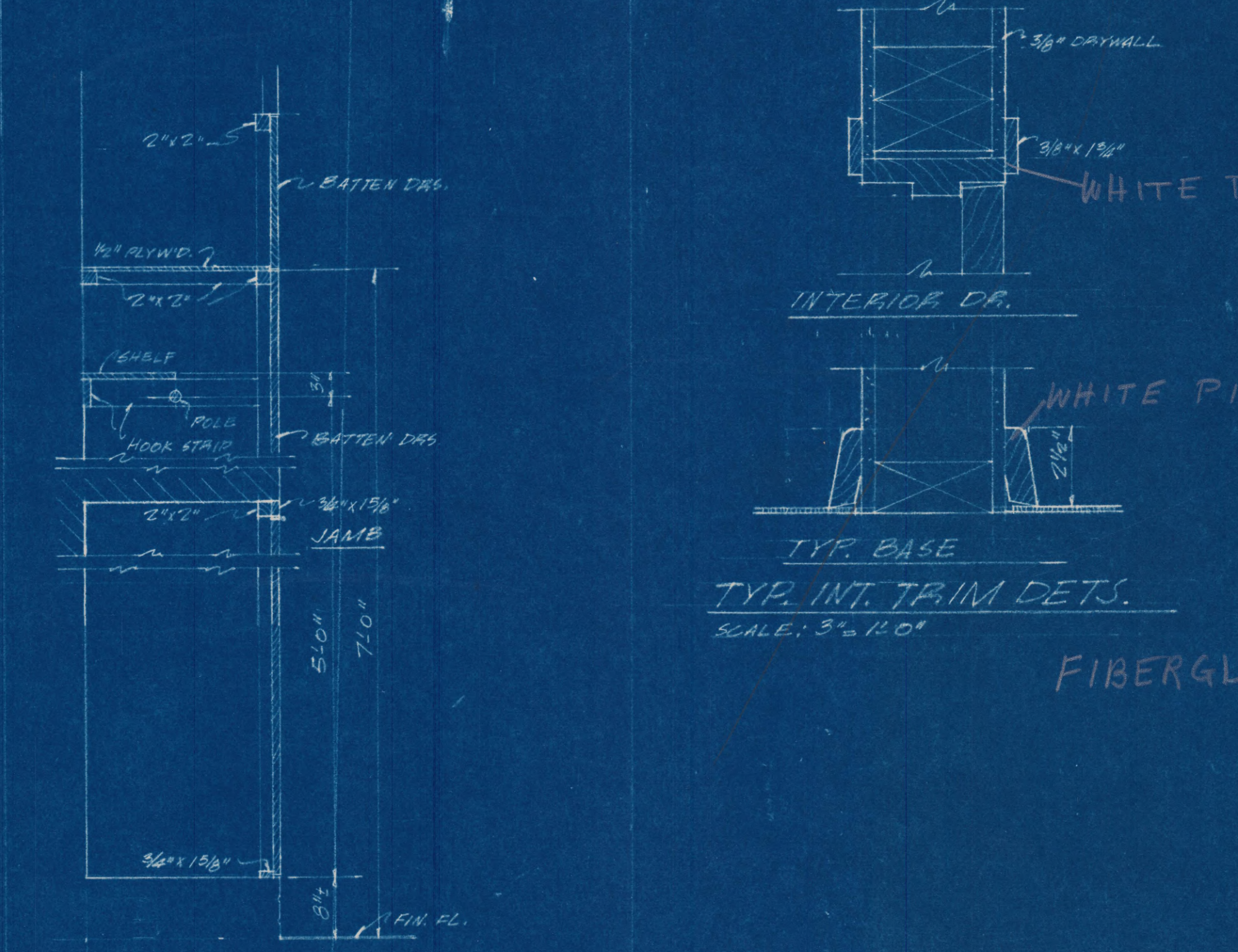
MILO PRODUCTS CORP.



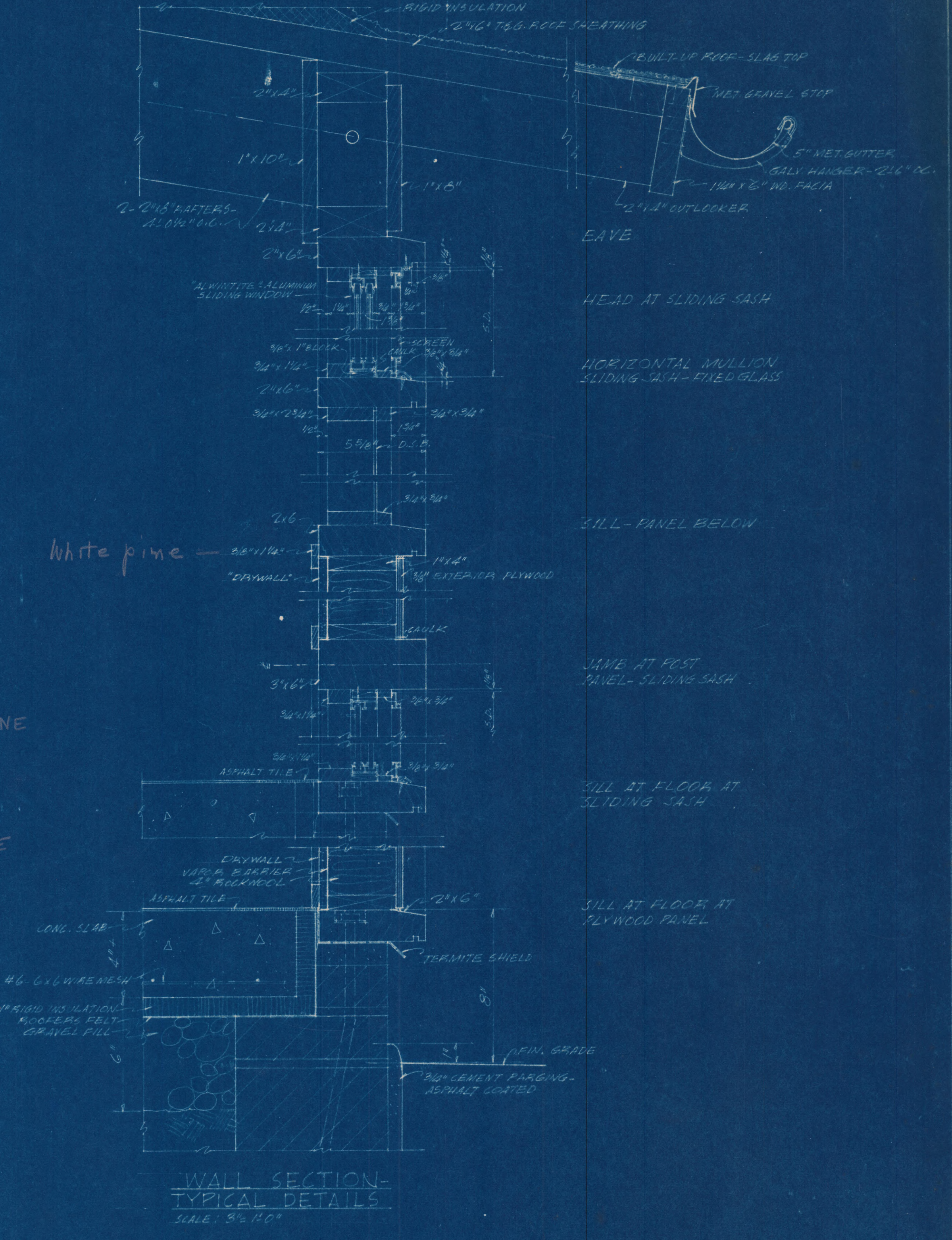
PLAN AT BR. CLOSETS SCALE: 3/8" = 1'-0"



DETAILS AT STUDY - BR. WALLS SCALE: 1/8" = 1'-0"



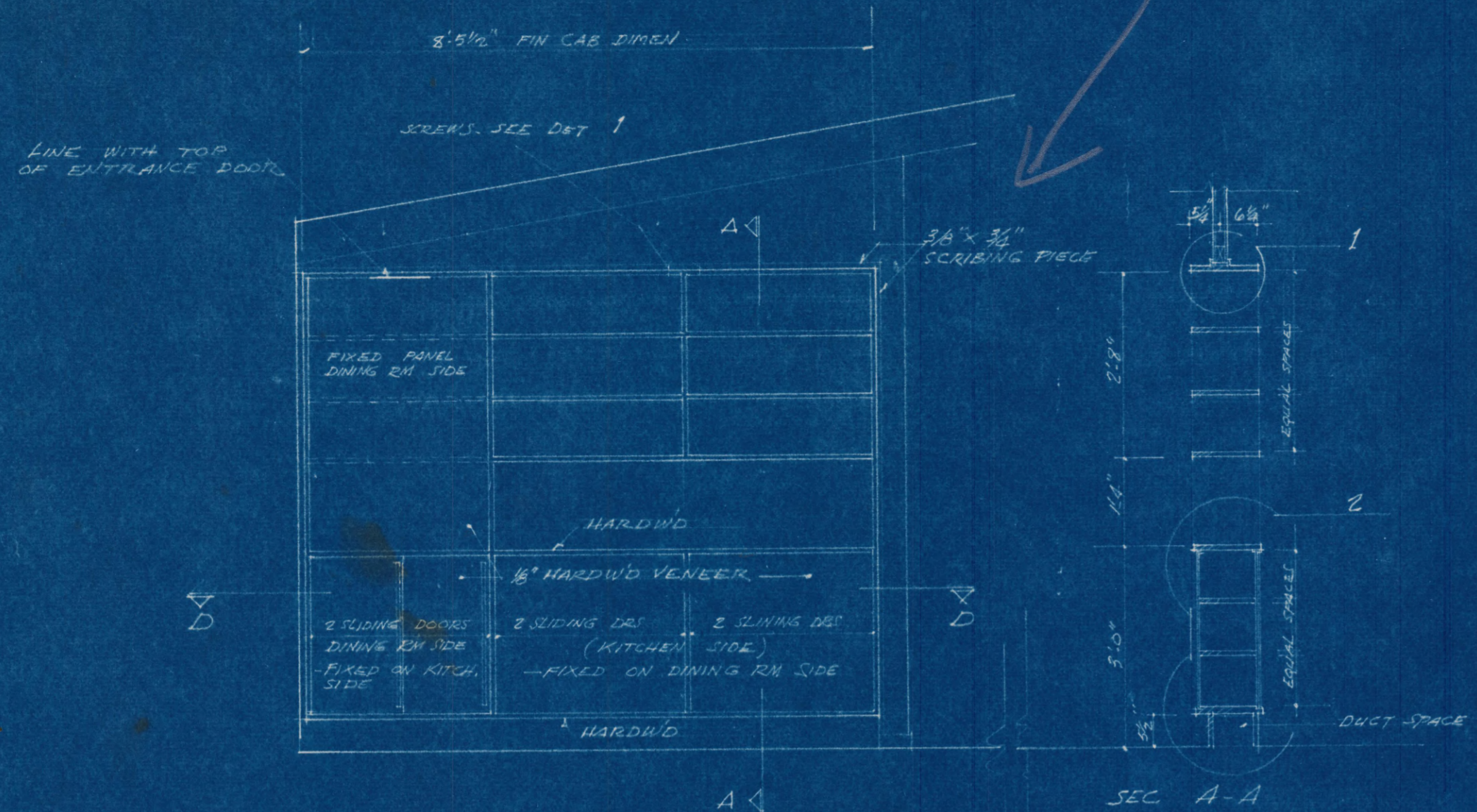
DETS. AT COAT CLOS. SCALE: 3/8" = 1'-0"



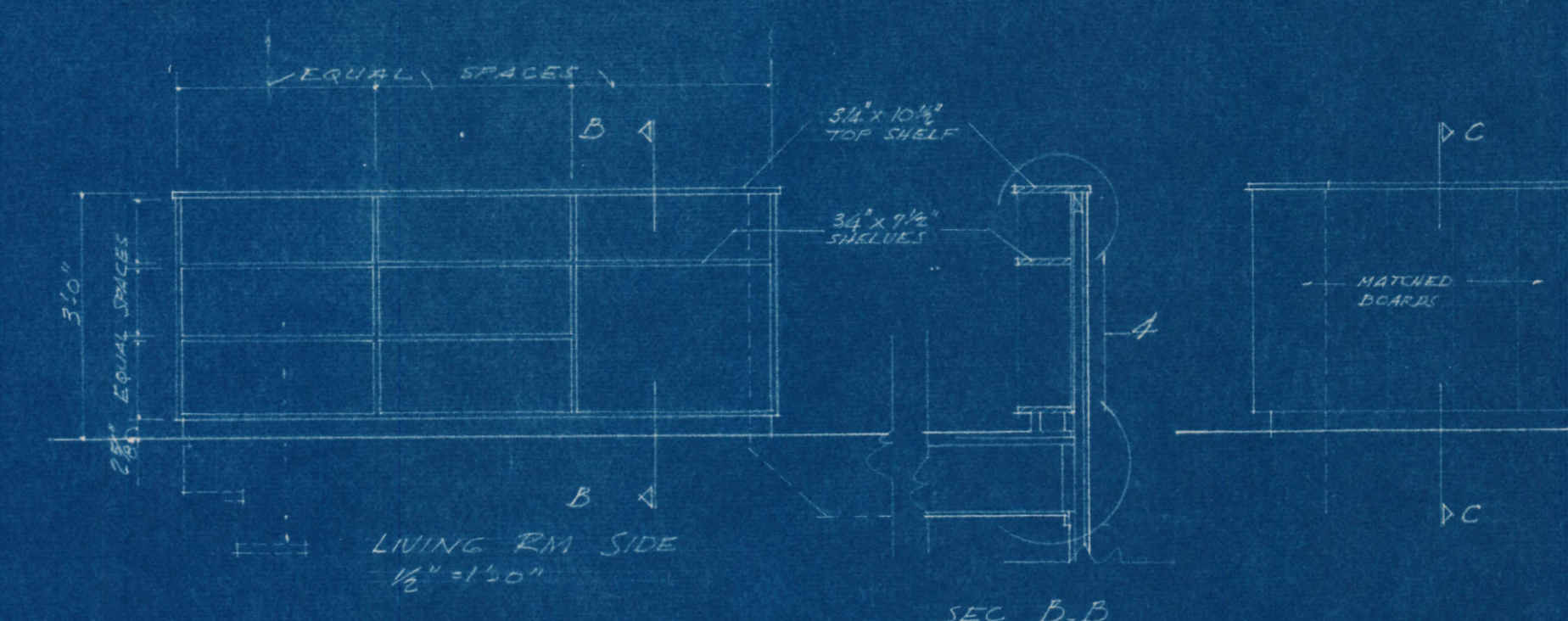
WALL SECTION - TYPICAL DETAILS SCALE: 3/8" = 1'-0"

HOUSE TYPES A, B-1, B-2

HOLMES RUN ACRES GALLOW'S ROAD - FAIRFAX COUNTY, VIRGINIA		10
TYPICAL DETAILS		
SCALE	NOTED	REVISIONS
DATE		NO. 1-11-50
SATTERLEE & LETHBRIDGE ARCHITECTS-ENGINEERS		3 DUPONT CIRCLE WASHINGTON, D.C.

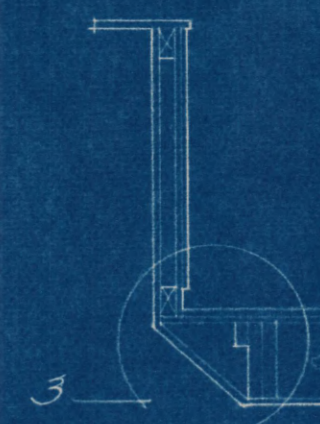


DINING RM ELEVATION
SCALE 1/2" = 1'-0"

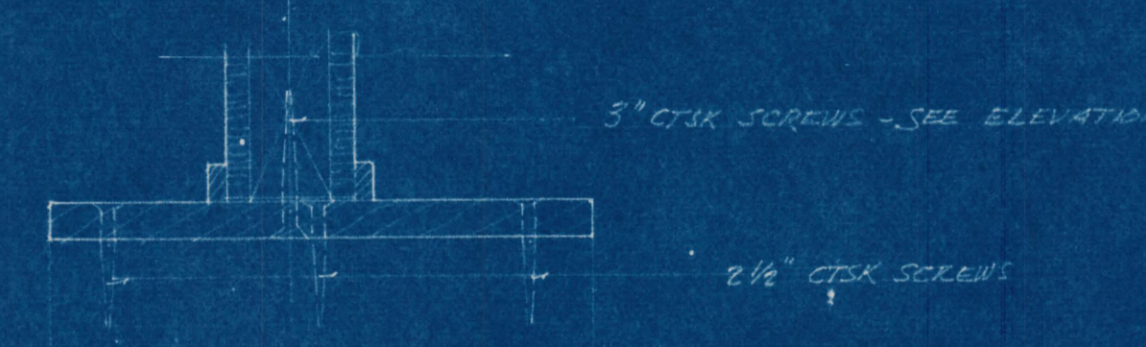


LIVING RM SIDE
16' x 12'0"

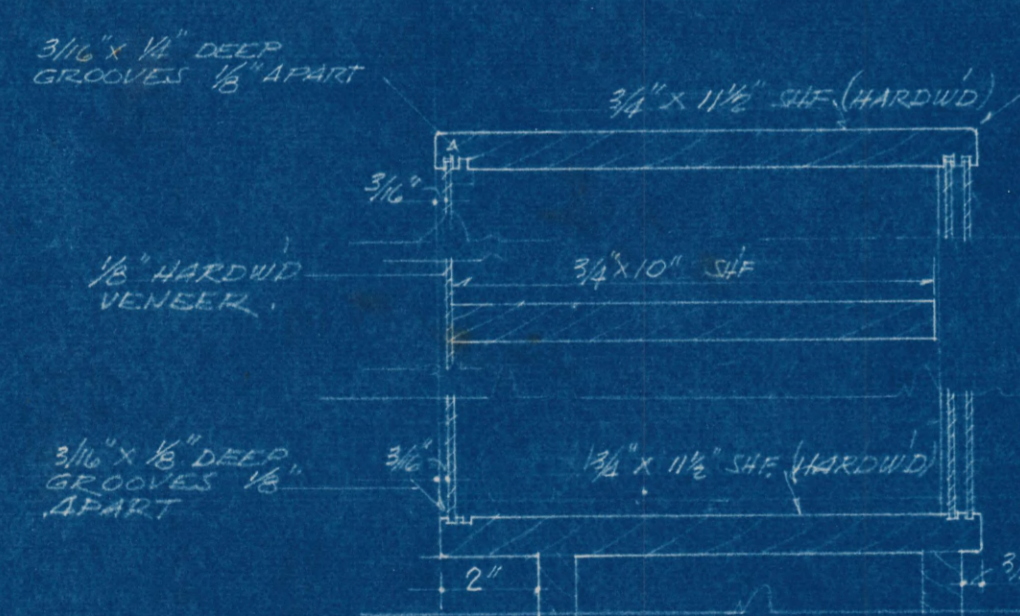
SEC B-B



SEC C-C

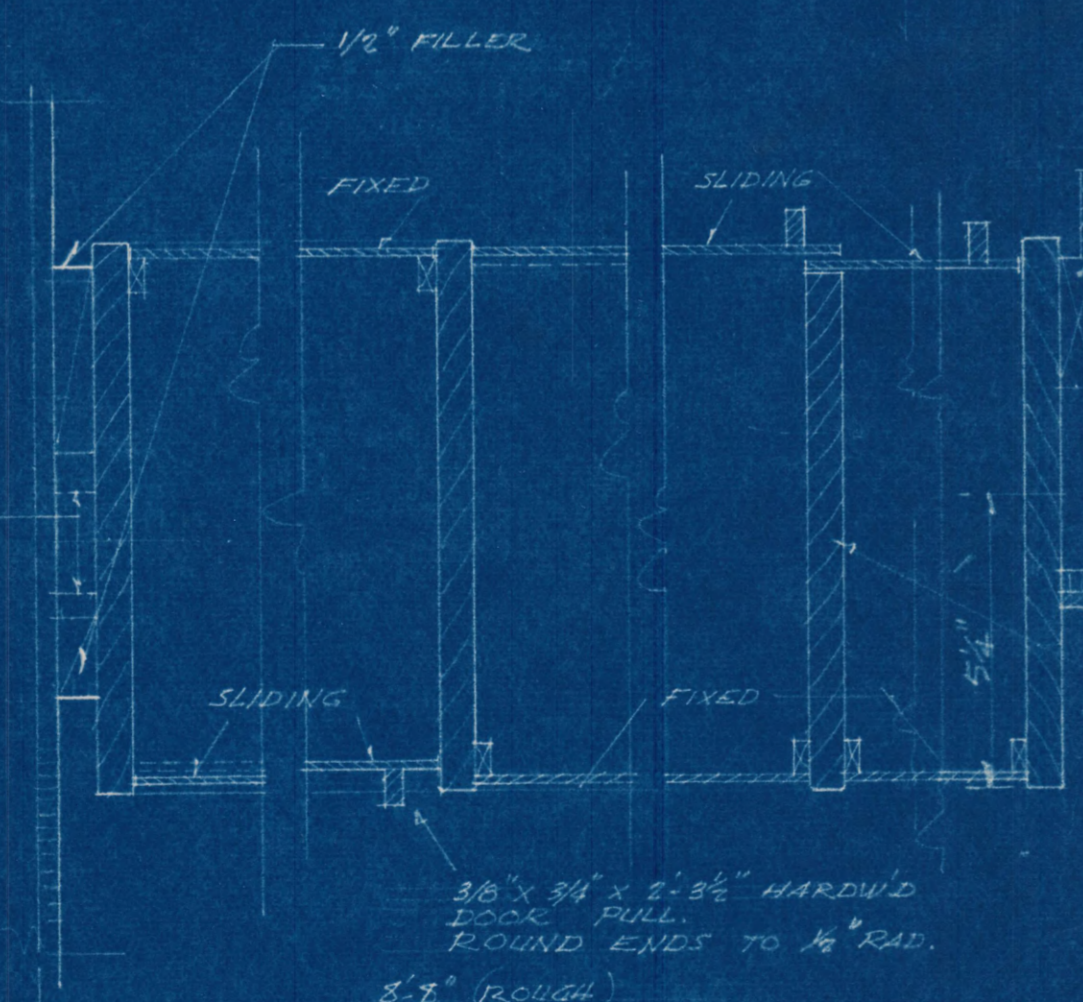


DET. 1

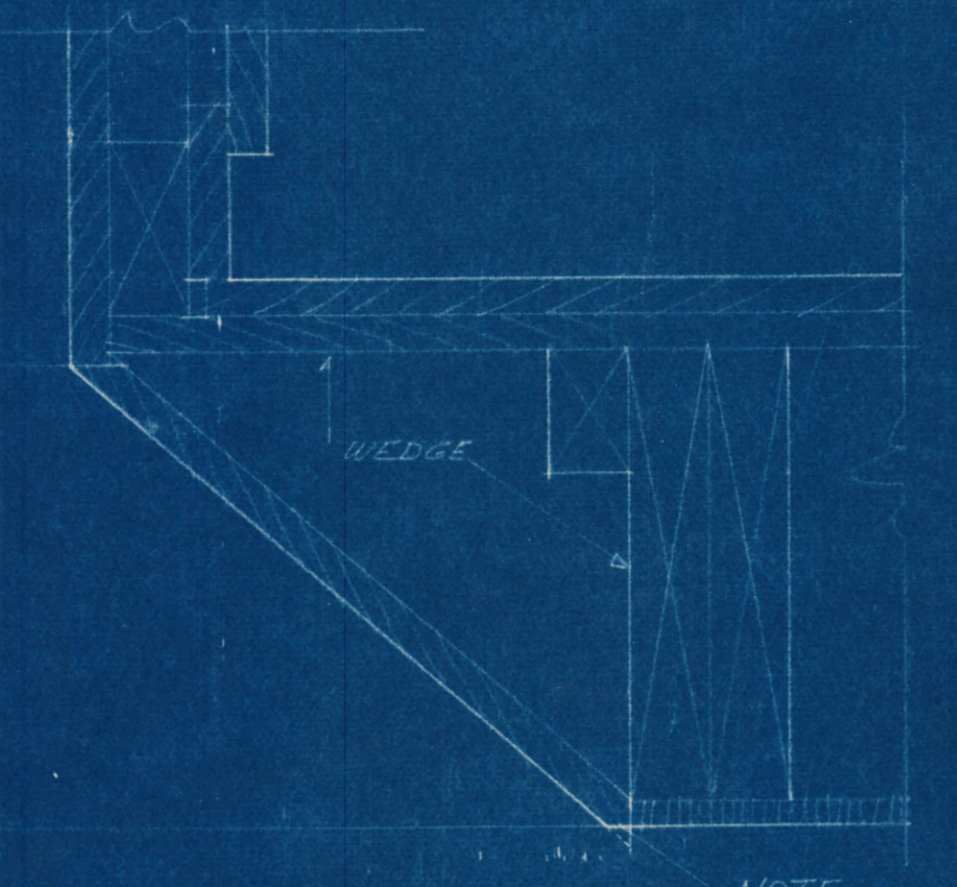


DET. 2

DETAILS OF CABINET WORK BETWEEN
KITCHEN & DINING RM.
ALL WOOD TO BE PINE EXCEPT PIECES NOTED HARDWD



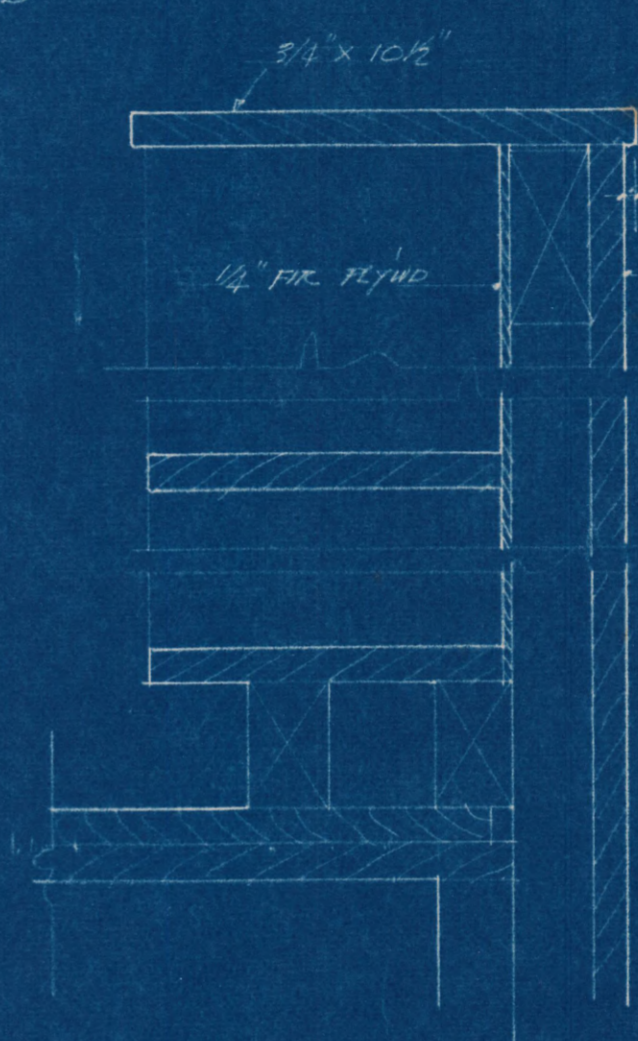
PLAN D-D
3" = 1'-0"



DET. 3

DETAILS OF SHELVES AT STAIRS - HOUSE TYPES B-1 & B-2.
SCALE 3" = 1'-0"
ALL WOOD EXCEPT FIR PLYWOOD SHELF BACK TO BE PINE

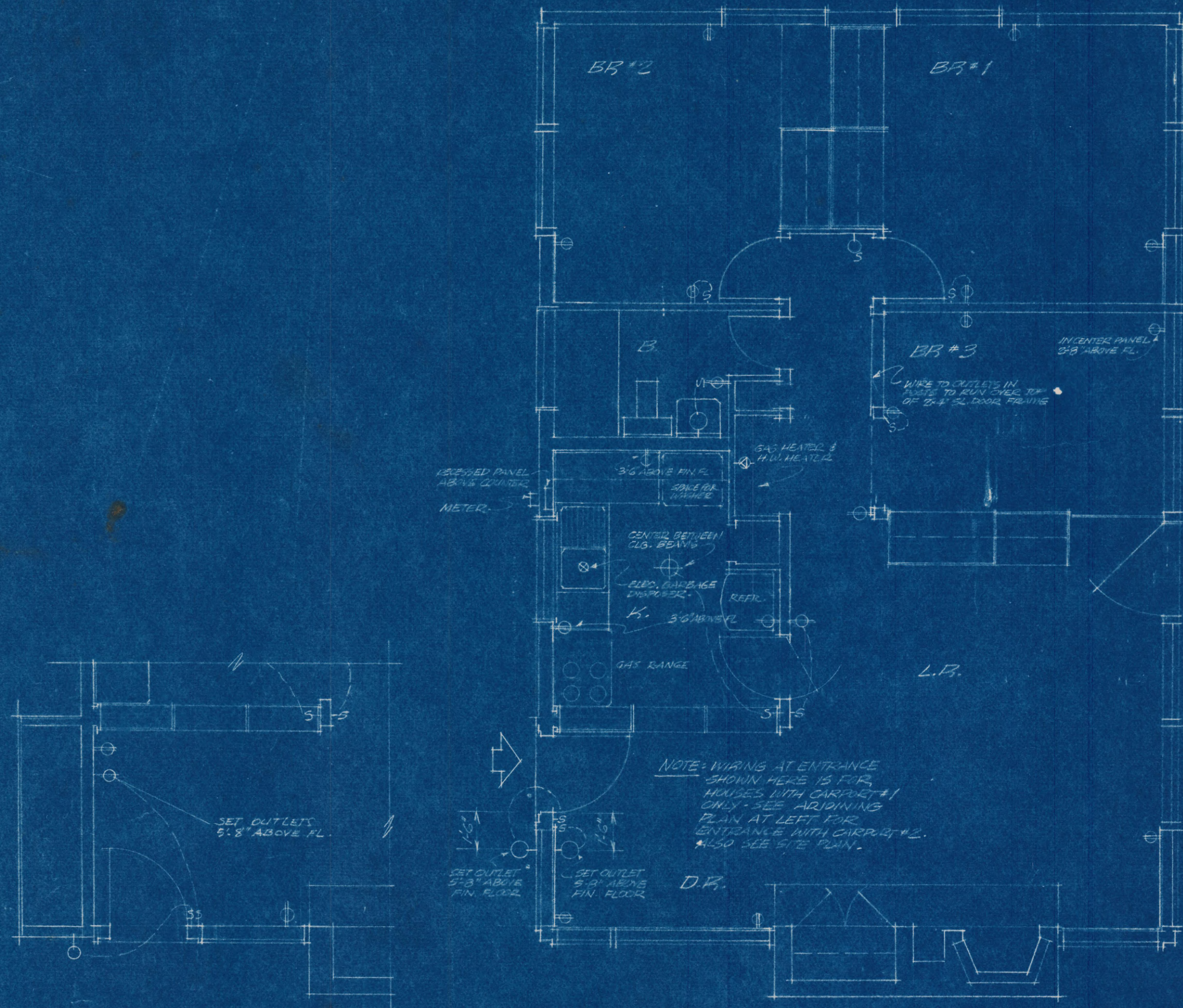
NOTE
THIS MULLION 10 1/2" DEEP
ALL OTHERS 1 1/2"



DET. 4

HOUSE TYPES A, B-1, B-2

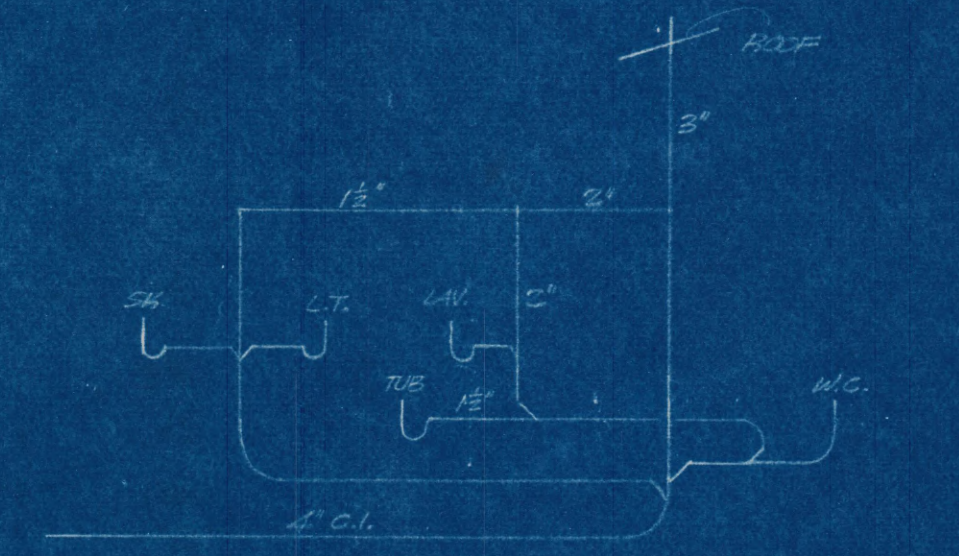
HOLMES RUN ACRES GALLOWS ROAD, FAIRFAX COUNTY, VA		SH
CABINET WORK		11
SCALE	NOTED	REVISIONS R-1, 2-19-51
DATE	2/13/51	OF 11
SATTERLEE & LETBRIDGE - ARCHITECTS-ENGINEERS 9 DUPONT CIRC. E. WASHINGTON, D. C.		



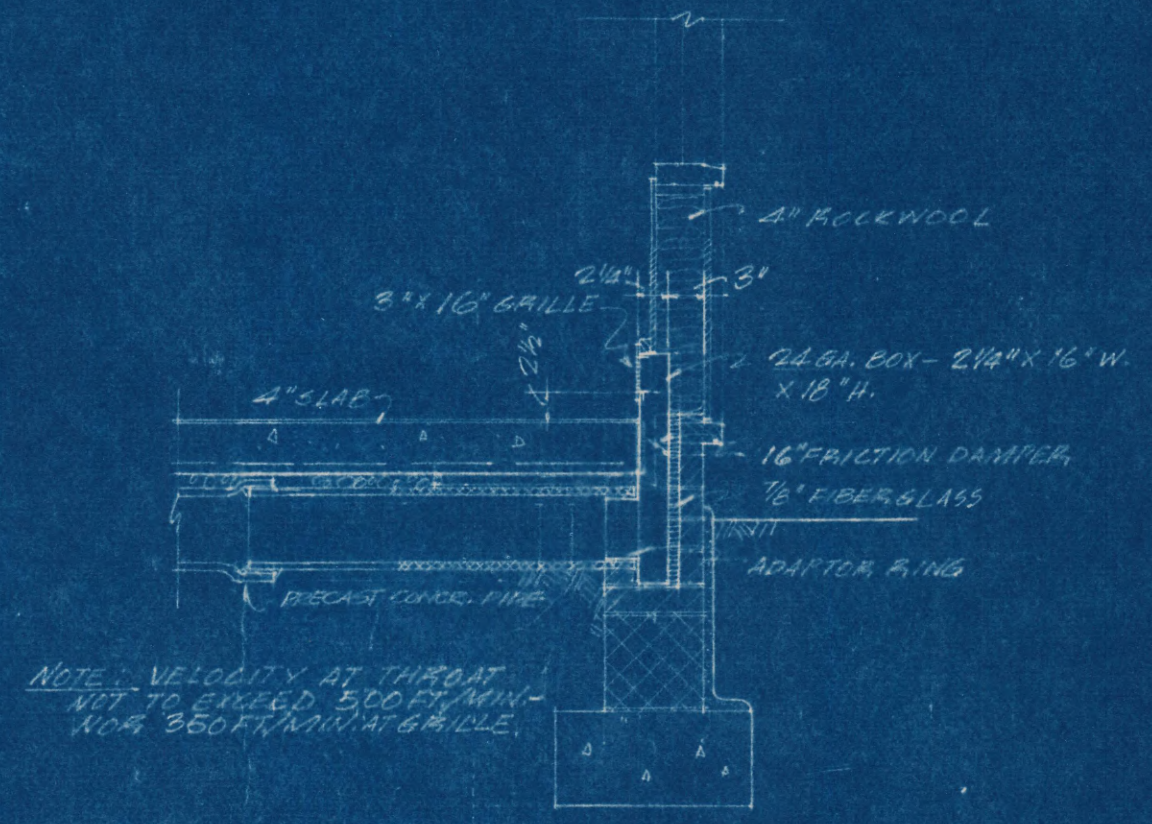
PART PLAN - ALTERNATE ENTRANCE

ELECTRICAL PLAN: SCALE - 1/4" = 1'-0"

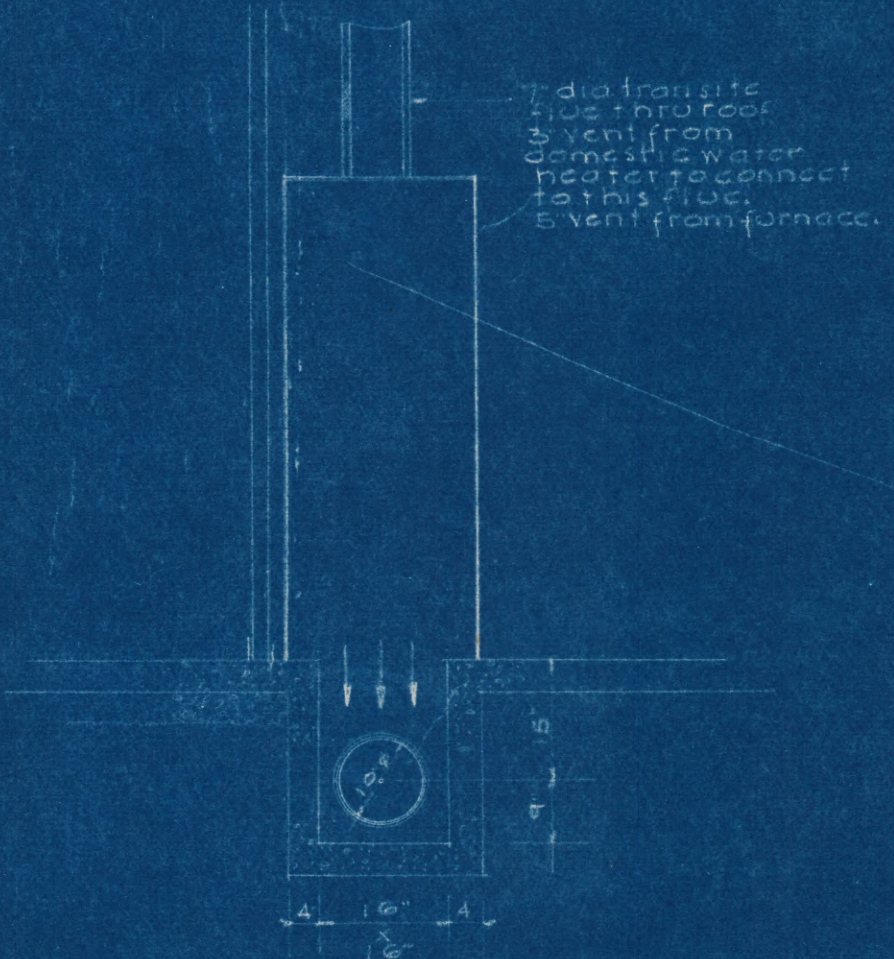
NOTES:
1. ALL DUPLEX RECEPTACLES, 1'-6" ABOVE FIN. FL., UNLESS OTHERWISE NOTED.



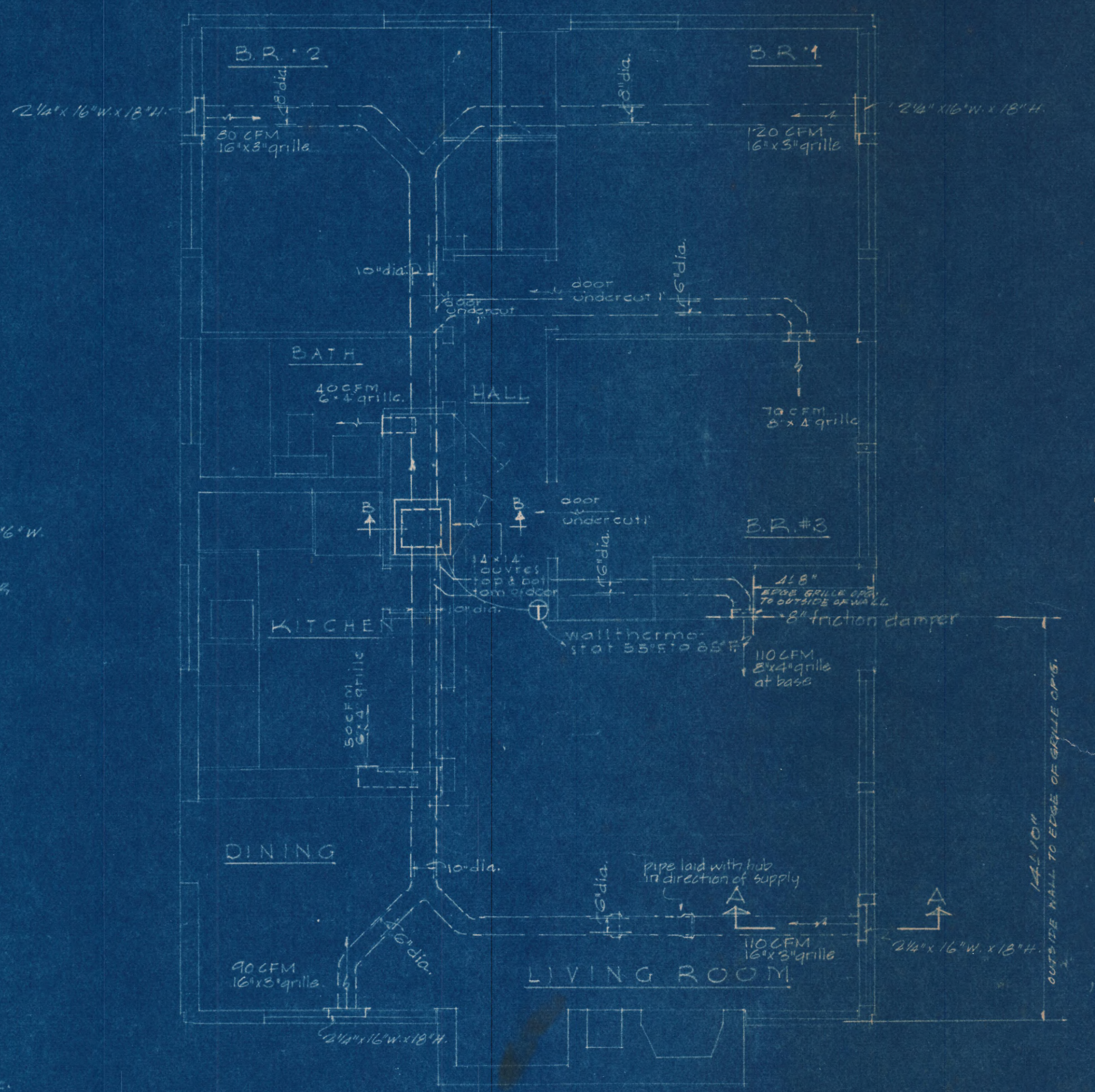
PLUMBING SECTION: NO SCALE



SECTION A-A



SECTION B-B



HEATING PLAN SCALE 1/4" = 1'-0"

WINTER AIR CONDITIONER: gas fired equal to American Wyanette SUA-70, 56000 b.t.u. cap. at bonnet, down blast discharge, 900 CFM air temp rise 1.20 external pressure.

DUCT WORK: shall be precast concrete pipe with cemented joints, laid so that bell end points in direction of flow. Sheet met. box at grille shall be at least 24 ga. - or if alum. - 2 ga. heavier.

GRILLES: shall be of a heavy gauge and have at least a clear opening of 20% of face area, and have at least one snap coat of paint.

CONTROLS: furnace fan from room thermostat when predetermined bonnet setting is reached - shut off when room thermostat setting is reached. main temp. shut off of gas burners from dual control in bonnet for plenum.

HOUSE TYPE A
HEATING & ELECTRICAL PLANS

Joseph Kelly Associates
Consulting Engineers
501 So. Albemarle Arlington, Va.

HOLMES RUN ACRES GALLOW'S ROAD - FAIRFAX COUNTY VA.		SH
MECHANICAL		
SCALE	NOTED	M-1 OF 3
DATE	REVISIONS F-1 - 7-20-59 10-15-50: WALL GRILLES, CONCR. PIPE 1-25-51: ELECT. OVER. REVISED	
SATTERLEE & LETHBRIDGE - ARCHITECTS-ENGINEERS 3 DU PONT CIRC. E. WASHINGTON, D. C.		