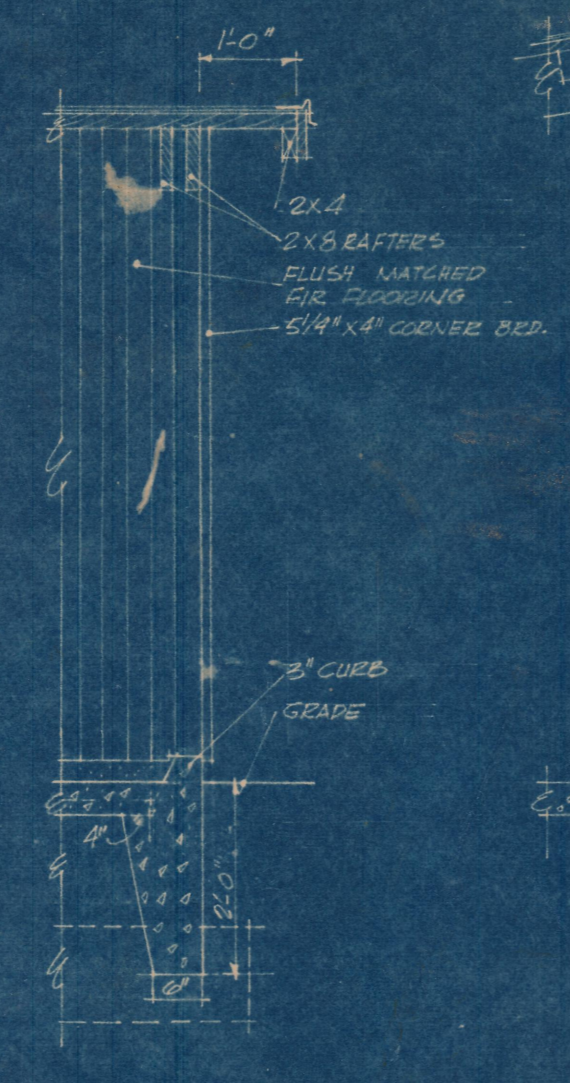
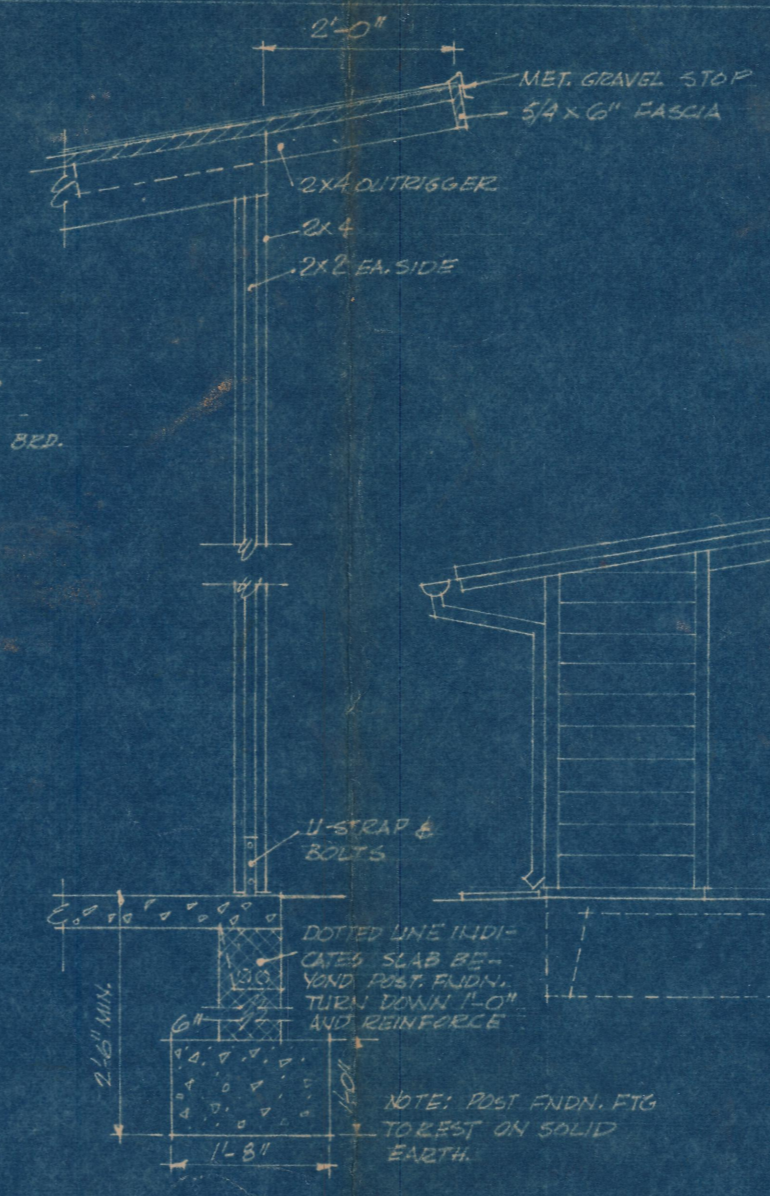


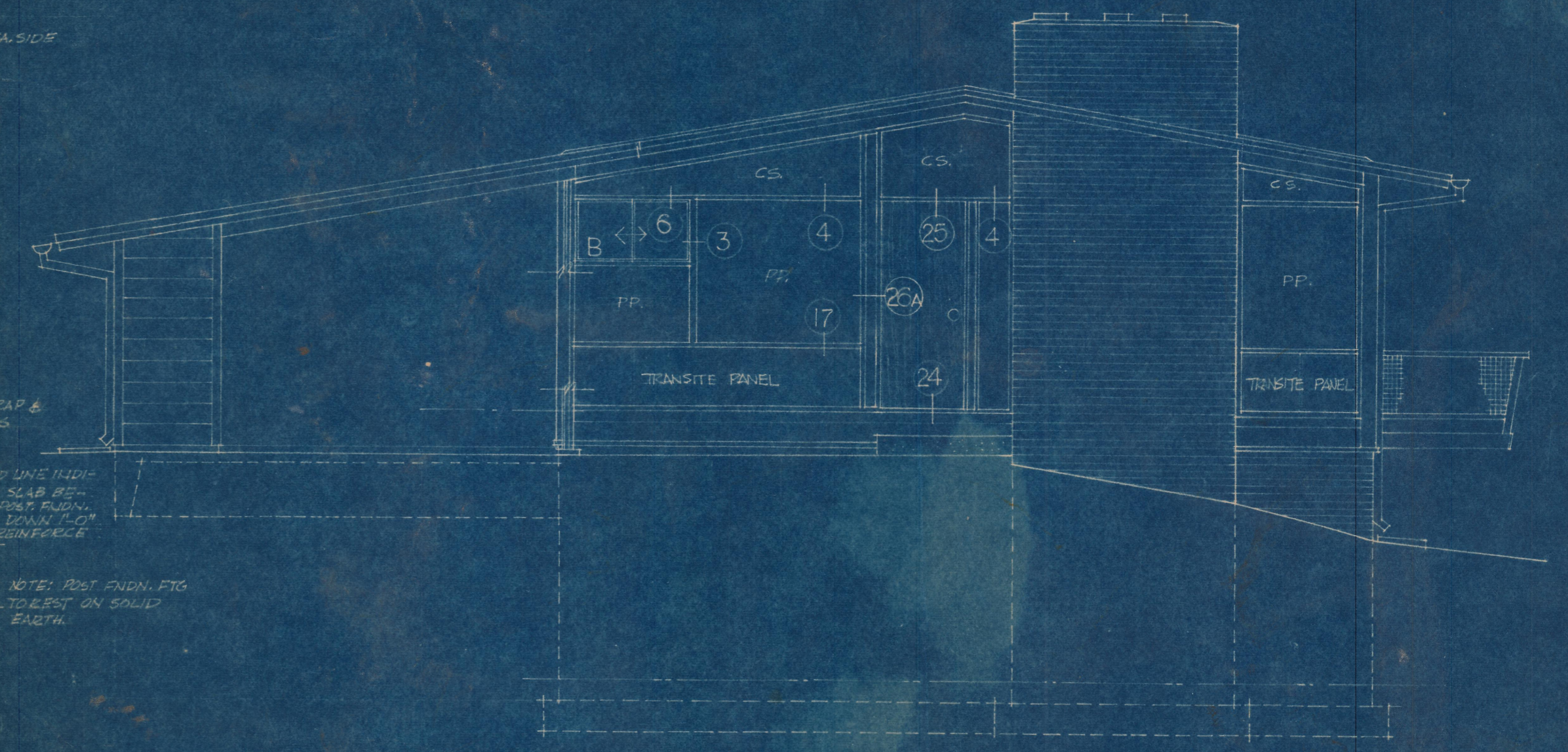
PLAN  
SCALE: 1/4" = 1'-0"



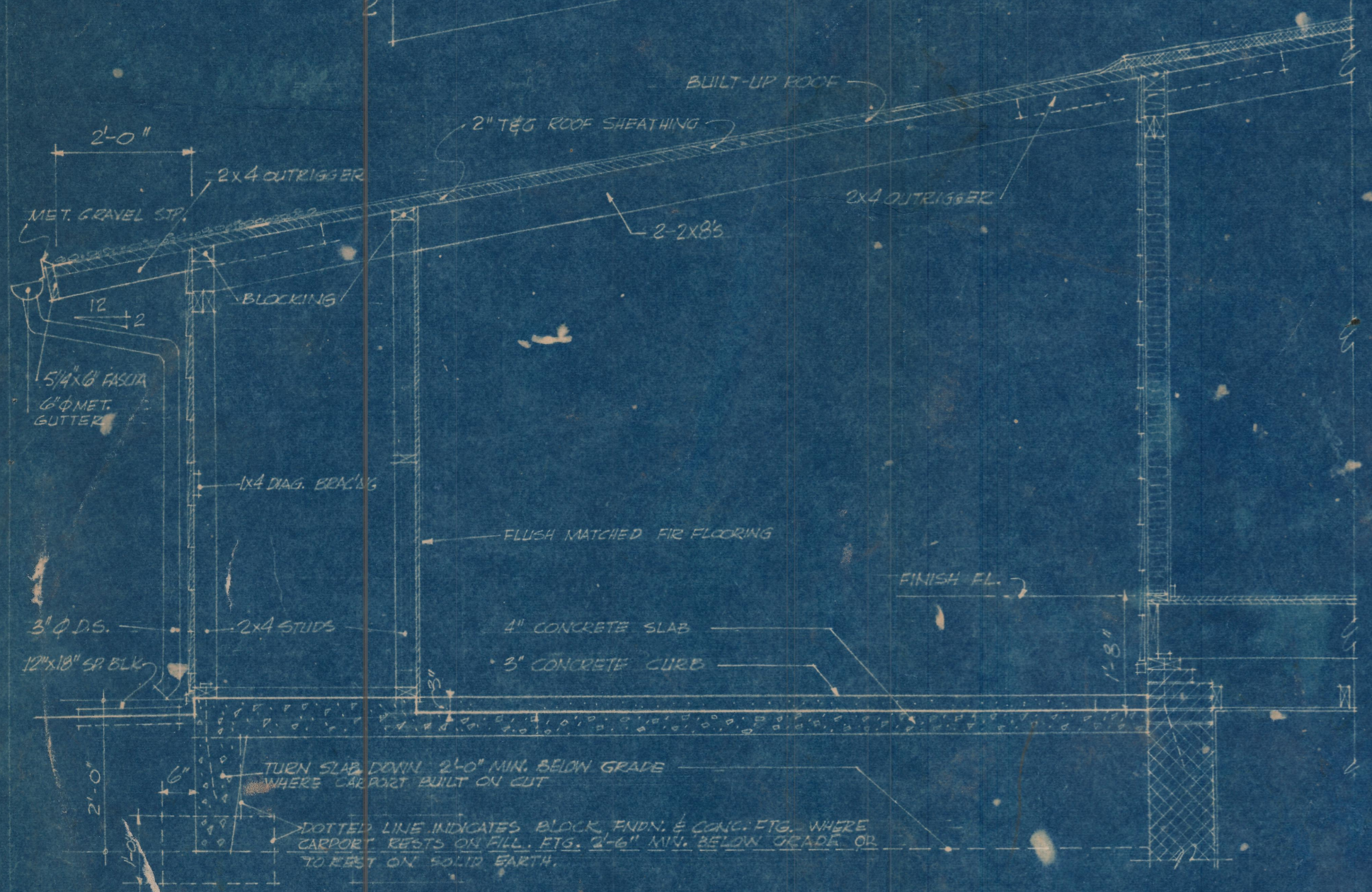
SECTION B  
SCALE: 1/2" = 1'-0"



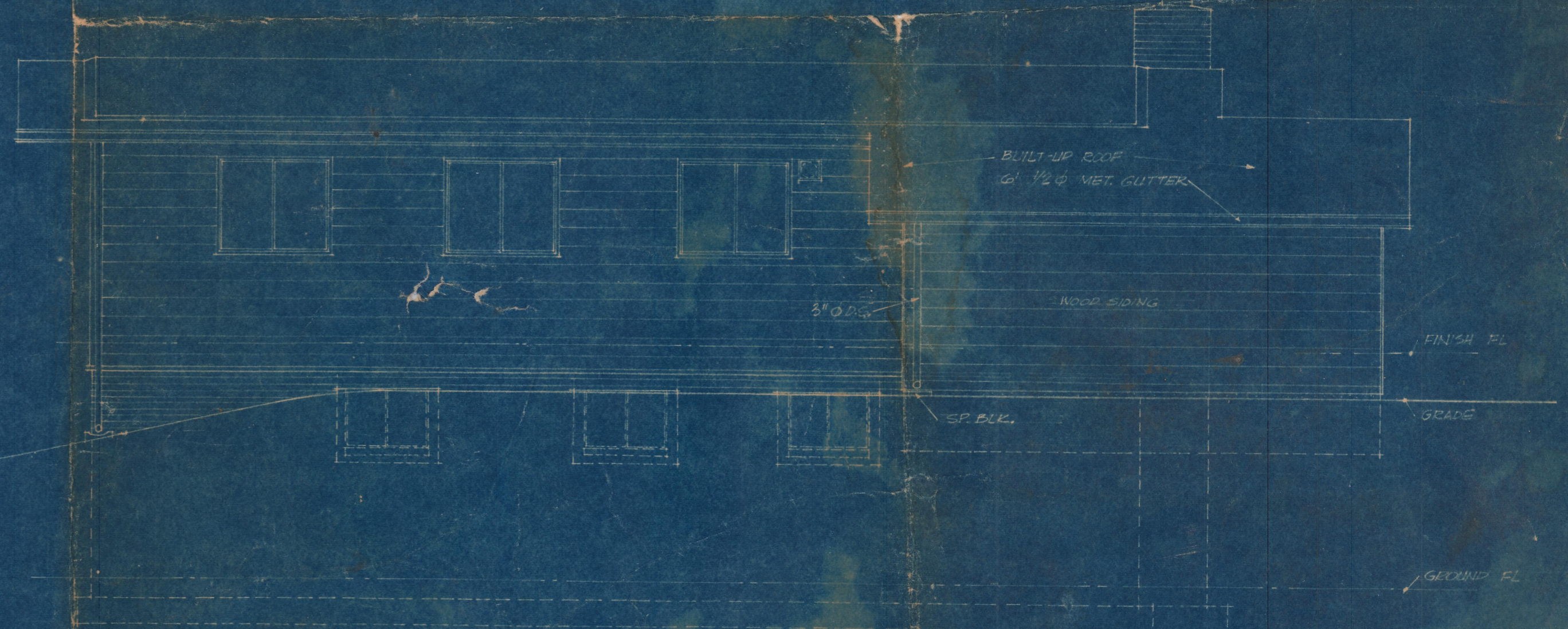
SECTION C  
SCALE: 1/2" = 1'-0"



ELEVATION B  
SCALE: 1/4" = 1'-0"

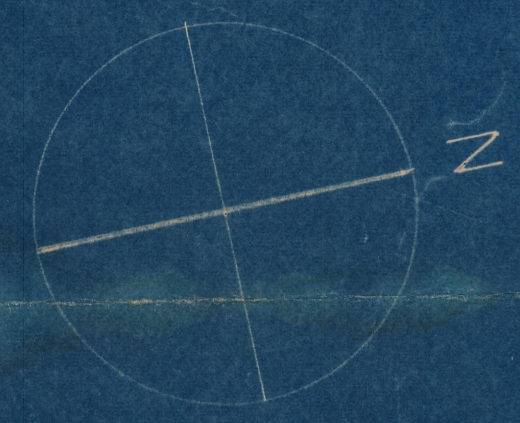
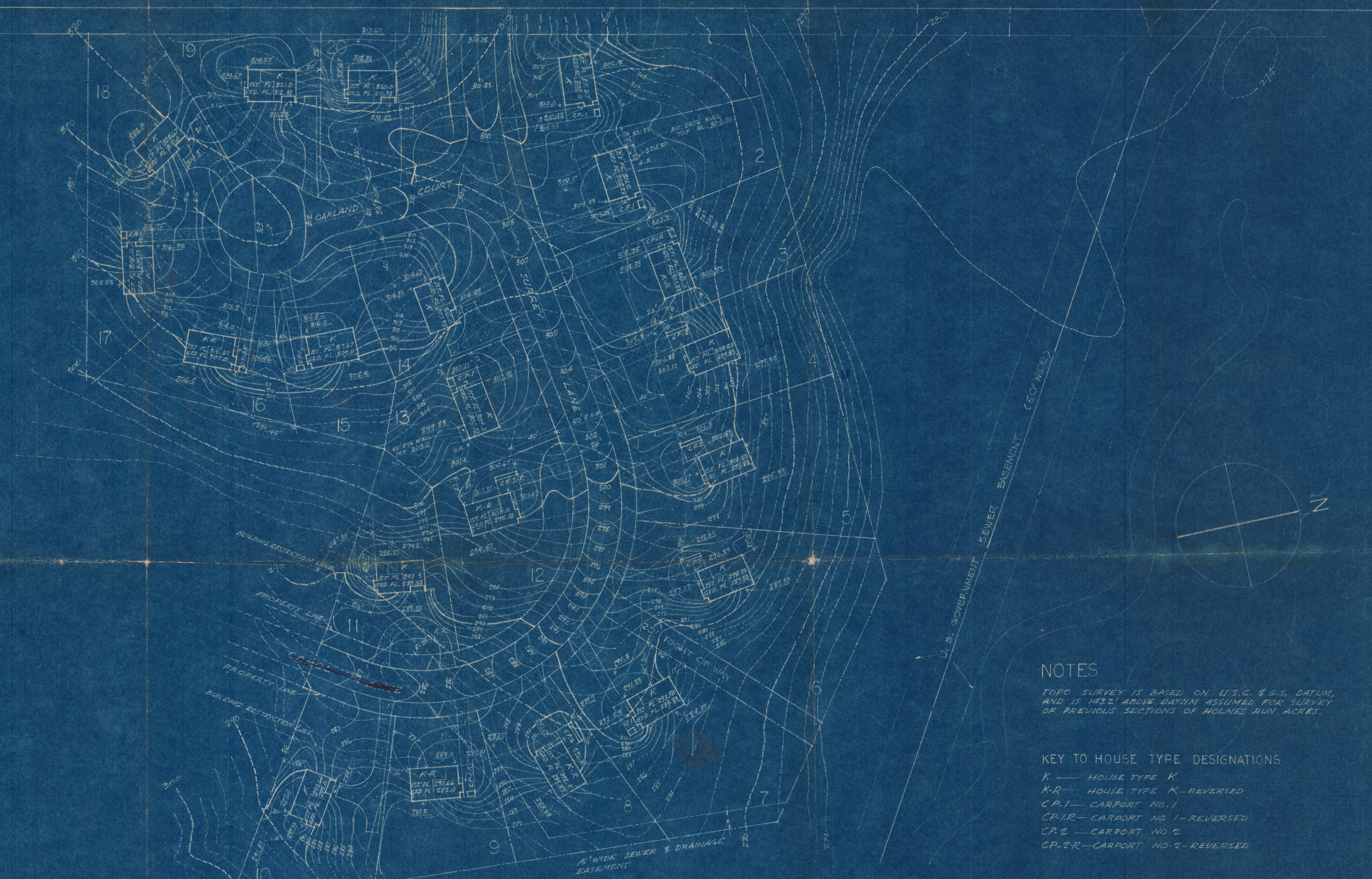


SECTION A  
SCALE: 1/2" = 1'-0"



ELEVATION C  
SCALE: 1/4" = 1'-0"

HOLMES, RUN ACRES GADDY & GADDY CONSTR. CO. GALLOWS ROAD FAIRFAX COUNTY, VA.		JOB	54-13
<b>CARPORT 2 - HOUSE TYPE K</b>		SH.	7
SCALE AS NOTED	DATE: 8/2/54	DRAWN BY: G.L.H.	CHECKED BY:
<b>KEYES, SMITH &amp; SATTERLEE ARCHITECTS</b> FRANCIS D. LETHBRIDGE - ASSOCIATE THREE DUPONT CIRCLE WASHINGTON 6, D.C. - HOBART 3515		OF	8



**NOTES**

TOPO SURVEY IS BASED ON U.S.C. & G.S. DATUM, AND IS 143.2' ABOVE DATUM ASSUMED FOR SURVEY OF PREVIOUS SECTIONS OF HOLMES RUN ACRES.

**KEY TO HOUSE TYPE DESIGNATIONS**

- K — HOUSE TYPE K
- K-R — HOUSE TYPE K-REVERSED
- C.P. 1 — CARPORT NO. 1
- C.P. 1-R — CARPORT NO. 1-REVERSED
- C.P. 2 — CARPORT NO. 2
- C.P. 2-R — CARPORT NO. 2-REVERSED

HOLMES RUN ACRES, GADDY & GADDY CONSTR. CO. GALLOWAY ROAD, FAIRFAX COUNTY, VA.		JOB
<b>SITE PLAN - SECTION II</b>		54-13
SCALE: 1" = 50'    DATE: 2-12-54    DRAWN BY: M.G.    CHECKED BY:		SH. S-9
<b>KEYES, SMITH &amp; SATTERLEE - ARCHITECTS</b> FRANCIS D. LETHBRIDGE - ASSOCIATE THREE DUPONT CIRCLE - WASHINGTON 6, D. C.    HOBART 3515		OF 8